

We encourage everyone to view the meeting live via YouTube.

***Leavenworth County
Board of County Commissioners***

Regular Meeting Agenda
300 Walnut Street, Suite 225
Leavenworth, KS 66048
October 2, 2024
9:00 a.m.

- I. CALL TO ORDER
- II. PLEDGE OF ALLEGIANCE/MOMENT OF SILENT PRAYER
- III. ROLL CALL
- IV. PUBLIC COMMENT: Public Comment shall be limited to 15 minutes at the beginning of each meeting and limited to three minutes per person. Anyone wishing to make comments either on items on the agenda or not are encouraged to provide their comments in writing no later than 8:00 AM the Monday immediately preceding the meeting. These comments will be included in the agenda packet for everyone to access and review. This allows the Commission to have time to fully consider input and request follow up if needed prior to the meeting.
- V. ADMINISTRATIVE BUSINESS:
- VI. CONSENT AGENDA: The items on the Consent Agenda are considered by staff to be routine business items. Approval of the items may be made by a single motion, seconded, and a majority vote with no separate discussion of any item listed. Should a member of the Governing Body desire to discuss any item, it will be removed from the Consent Agenda and considered separately.
 - a) Approval of the minutes of the meeting of September 25, 2024
 - b) Approval of the schedule for the week October 7, 2024
 - c) Approval of the check register
 - d) Approve and sign the OCB's
- VII. FORMAL BOARD ACTION:

- a) Consider a motion to approve the 2024 Edward Byrne Grant in the amount of \$10,000.00 for the purchase of law enforcement equipment for the Sheriff's Department.
- b) Consider a motion to award bid to Sirius for IBM hardware and software licensing and engage FSC for professional services in an amount not to exceed \$42,900.30.
- c) Consider a motion to approve the Wellness Incentive Policy effective October 1, 2024.
- d) Consider a motion to approve an occupancy agreement with Leavenworth City Fire and EMS for a period of 1 year.
- e) Consider a motion to approve the EMS Director to place an order for the 2026 and 2027 replacement ambulances in the amount of \$332,969.50 per unit.
- f) Consider a motion to adopt Resolution 2024-24 and approve the rezoning as outlined in Case DEV-24-110 based on the findings of the Golden Factors, as set forth in the staff report and as substantiated by the findings of fact as adopted by the Planning Commission.

VIII. PRESENTATIONS AND DISCUSSION ITEMS: presentations are materials of general concern where no action or vote is requested or anticipated.

- a) County Appraiser presentation

IX. ADJOURNMENT

WORK SESSION TO DISCUSS ROAD IMPROVEMENT POLICY

LEAVENWORTH COUNTY COMMISSIONERS MEETING SCHEDULE

Monday, September 30, 2024

Tuesday, October 1, 2024

Wednesday, October 2, 2024

9:00 a.m. Leavenworth County Commission meeting
• Commission Meeting Room, 300 Walnut, Leavenworth KS

Thursday, October 3, 2024

Friday, October 4, 2024

ALL SUCH OTHER BUSINESS THAT MAY COME BEFORE THE COMMISSION

ALL MEETINGS ARE OPEN TO THE PUBLIC

COMMENTS SHOULD BE OF GENERAL INTEREST OF THE PUBLIC AND SUBJECT TO THE RULES OF DECORUM

*****September 25, 2024 *****

The Board of County Commissioners met in a regular session on Wednesday, September 25, 2024. Commissioner Culbertson, Commissioner Kaaz, Commissioner Mike Smith and Commissioner Doug Smith and Commissioner Stieben are present; Also present: Mark Loughry, County Administrator; David Van Parys, Senior County Counselor; Misty Brown, Deputy County Counselor; John Jacobson, Planning and Zoning Director; Amy Allison, Planning and Zoning Deputy Director; John Richmeier, Leavenworth Times

PUBLIC COMMENT:

Cody Herbster commented.

ADMINISTRATIVE BUSINESS:

Mark Loughry reported that Community Corrections received a three-year grant with matching funds for data collection and tracking of individuals with mental health issues in the judicial system.

Commissioner Mike Smith inquired if the Commission would contribute to the port-a-potties for the Veteran's Day Parade.

It was the consensus of the Board to contribute \$20.00 each to the Veteran's Day Parade.

Commissioner Stieben recognized a letter from the Leavenworth Humane Society about dropping contractual services.

Mr. Loughry indicated he would reach out to the Sheriff about the status.

Commissioner Doug Smith brought up the resolution that was passed that mentions RV parks and the length one can live in an RV.

Mr. Loughry reiterated that code enforcement is based on a complaint basis.

A work session will be scheduled to discuss the subdivision guidelines.

A motion was made by Commissioner Kaaz and seconded by Commissioner Mike Smith to accept the consent agenda for Wednesday, September 25, 2024 as presented.

Motion passed, 4-0. Commissioner Doug Smith abstained.

Jamie Miller requested approval of an updated Medical Director Agreement.

A motion was made by Commissioner Stieben and seconded by Commissioner Culbertson to table this until the Board meets with Dr. McBratney.

Motion failed, 2-3 Commissioners Doug Smith, Kaaz and Mike Smith voting nay.

A motion was made by Commissioner Stieben and seconded by Commissioner Mike Smith that the doctor be invited to speak with the Board next time the contract is up.

Motion passed, 4-1, Commissioner Kaaz voting nay.

A motion was made by Commissioner Mike Smith and seconded by Commissioner Kaaz to authorize the chairperson to sign the updated Medical Director Agreement for EMS and Health Department.

Motion passed, 4-1 Commissioner Stieben voting nay.

Mr. Miller requested approval of a MOU between Leavenworth County Health Department and the Oklahoma Mother's Milk Bank.

A motion was made by Commissioner Stieben and seconded by Commissioner Mike Smith to authorize the chairperson to sign the MOU between the Leavenworth County Health Department and Oklahoma Mother's Milk Bank.

Motion passed, 5-0.

Bill Noll requested authorization to place a 2012 Freightliner M2106 on PurpleWave.

A motion was made by Commissioner Doug Smith and seconded by Commissioner Mike Smith to approve the surplus of a dump truck, plow and sander, truck #54 a 2012 Freightliner to be put on PurpleWave Auction.

Motion passed, 5-0.

Aaron Yoakam requested approval of an agreement with Treanor, Inc. for architectural services and create bid documents for the repairs of the exterior cladding and rooftop of the Courthouse in the amount of \$323,500.00.

A motion was made by Commissioner Mike Smith and seconded by Commissioner Kaaz to approve an agreement with Treanor, Inc. for architectural services and create bid documents for the repairs of the existing exterior cladding and rooftop of the Courthouse in the amount of \$323,500.00.

Motion passed, 4-1. Commissioner Doug Smith voting nay.

Amy Allison presented Case DEV-24-077, a preliminary and final plat for Koch Acres.

A motion was made by Commissioner Stieben and seconded by Commissioner Doug Smith that the proposed Final Plat as outline in case DEV-24-077 be approved with conditions, that the plat is compliant with the County Zoning and Subdivision Regulations, as set forth in the staff report, as adopted by the Planning Commission and as substantiated by the facts, testimony and evidence presented, be accepted by this Board and that the conditions set forth in the staff report be made part of this approval.

Motion passed, 5-0.

Ms. Allison presented Case DEV-24-081, a preliminary and final plat for E&R Rolling Meadows North.

A motion was made by Commissioner Doug Smith and seconded by Commissioner Stieben that the proposed Final Plat as outline in case DEV-24-081 be approved with conditions, that the plat is compliant with the County Zoning and Subdivision Regulations, as set forth in the staff report, as adopted by the Planning Commission and as substantiated by the facts, testimony and evidence presented, be accepted by this Board and that the conditions set forth in the staff report be made part of this approval.

Motion passed, 5-0.

Ms. Allison presented Case DEV-24-086, a preliminary and final plat for Dodge Addition #2.

A motion was made by Commissioner Stieben and seconded by Commissioner Kaaz that the proposed Final Plat as outline in case DEV-24-086 be approved with conditions, that the plat is compliant with the County Zoning and Subdivision Regulations, as set forth in the staff report, as adopted by the

Planning Commission and as substantiated by the facts, testimony and evidence presented, be accepted by this Board and that the conditions set forth in the staff report be made part of this approval.

Motion passed, 5-0.

Ms. Allison presented Case DEV-24-101, a preliminary and final plat for Thomas Farms, 2nd plat.

A motion was made by Commissioner Doug Smith and seconded by Commissioner Mike Smith to table Case DEV-24-101 to October 9, 2024.

Motion passed, 4-1 Commissioner Stieben voting nay.

Ms. Allison presented Case DEV-24-103, a preliminary and final plat for Smith Ridge.

A motion was made by Commissioner Kaaz and seconded by Commissioner Mike Smith that the proposed Final Plat as outline in case DEV-24-103 be approved with conditions, that the plat is compliant with the County Zoning and Subdivision Regulations, as set forth in the staff report, as adopted by the Planning Commission and as substantiated by the facts, testimony and evidence presented, be accepted by this Board and that the conditions set forth in the staff report be made part of this approval.

Motion passed, 4-0 Commissioner Doug Smith abstained.

Mr. Noll updated the Board on the 158th St. and K-32 project.

Commissioner Culbertson attended the MARC meeting along with Commissioner Doug Smith. He also attended the Leavenworth City Commission meeting.

Commissioner Doug Smith attended a water cyber security presentation along with Commissioner Stieben.

Commissioner Stieben will participate in a legislative policy committee meeting.

Commissioner Kaaz participated in the NEK-CAP Board of Directors meeting and will attend the Transit Authority meeting.

Commissioner Mike Smith toured the new Lansing City Hall.

A motion was made by Commissioner Mike Smith and seconded by Commissioner Doug Smith to adjourn.

Motion passed, 5-0.

The Board adjourned at 10:22 a.m.

LEAVENWORTH COUNTY COMMISSIONERS MEETING SCHEDULE

Monday, October 7, 2024

Tuesday, October 8, 2024

Wednesday, October 9, 2024

9:00 a.m. Leavenworth County Commission meeting
• Commission Meeting Room, 300 Walnut, Leavenworth KS

Thursday, October 10, 2024

12:00 p.m. LCDC meeting

Friday, October 11, 2024

ALL SUCH OTHER BUSINESS THAT MAY COME BEFORE THE COMMISSION

ALL MEETINGS ARE OPEN TO THE PUBLIC

COMMENTS SHOULD BE OF GENERAL INTEREST OF THE PUBLIC AND SUBJECT TO THE RULES OF DECORUM

FMWARRPTR2	LEAVENWORTH COUNTY							9/26/24	16:51:42
DCOX	WARRANT REGISTER - BY FUND / VENDOR							Page	1
START DATE: 09/21/2024 END DATE: 09/27/2024									
TYPES OF CHECKS SELECTED: * ALL TYPES									
			P.O.NUMBER	CHECK#					
20588	ADVANTAGE	ADVANTAGE PRINTING	344416	110663 AP	09/27/2024	4-001-5-06-217	180 PLANNING/ZONING ENVELOPES	228.00	
249	AMBERWELL	ATCHISON HOSPITAL	344417	110664 AP	09/27/2024	4-001-5-07-206	SHERIFF - NEW EMPLOYEE TESTING	248.00	
249	AMBERWELL	ATCHISON HOSPITAL	344417	110664 AP	09/27/2024	4-001-5-07-206	SHERIFF - NEW EMPLOYEE TESTING	248.00	
249	AMBERWELL	ATCHISON HOSPITAL	344417	110664 AP	09/27/2024	4-001-5-28-212	HR: EMPLOYEE TESTING	560.00	
*** VENDOR							249 TOTAL	1,056.00	
1523	BOB BARKER	BOB BARKER CO INC	344420	110667 AP	09/27/2024	4-001-5-07-359	LEAKS4 JAIL SUPPLIES	527.64	
340	BROOKS-JEFFREY	BROOKS-JEFFREY MARKETING INC	344422	110669 AP	09/27/2024	4-001-5-07-208	LVSOKS APP SERVICES TO SEP 202	3,000.00	
661	CDJ AUTOMOTIVE LLC	CDJ AUTOMOTIVE LLC	344423	110670 AP	09/27/2024	4-001-5-07-213	45132 SHERIFF UNIT 128 WARRANT	284.90	
8103	CHARTER COMMUNICATIO	CHARTER COMMUNICATIONS	344479	291	09/27/2024	4-001-5-07-216	INTERNET FOR EOC	74.99	
8103	CHARTER COMMUNICATIO	CHARTER COMMUNICATIONS	344479	291	09/27/2024	4-001-5-07-219	INTERNT ACCESS - MENTAL HEALTH	182.01	
8103	CHARTER COMMUNICATIO	CHARTER COMMUNICATIONS	344391	284	09/23/2024	4-001-5-18-213	122236601 CONTRACTUAL ACCESS F	2,208.80	
8103	CHARTER COMMUNICATIO	CHARTER COMMUNICATIONS	344479	291	09/27/2024	4-001-5-18-213	COUNTY ACCESS FEES	159.98	
8103	CHARTER COMMUNICATIO	CHARTER COMMUNICATIONS	344479	291	09/27/2024	4-001-5-18-213	COUNTY ACCESS FEES	159.98	
*** VENDOR							8103 TOTAL	2,785.76	
5637	CLEARWATER ENTERPRIS	CLEARWATER ENTERPRISES,LLC	344384	110656 AP	09/23/2024	4-001-5-14-220	20642- GAS SERVICE	473.37	
5637	CLEARWATER ENTERPRIS	CLEARWATER ENTERPRISES,LLC	344384	110656 AP	09/23/2024	4-001-5-32-392	20642- GAS SERVICE	714.19	
*** VENDOR							5637 TOTAL	1,187.56	
648	COMMERCE BANK-COMMER	COMMERCE BANK-COMMERCIAL CARDS	344477	289	09/27/2024	4-001-5-01-202	BOCC KAC/COC/WSU/ECON CONF, SO	978.50	
648	COMMERCE BANK-COMMER	COMMERCE BANK-COMMERCIAL CARDS	344477	289	09/27/2024	4-001-5-01-202	BOCC KAC/COC/WSU/ECON CONF, SO	156.50	
648	COMMERCE BANK-COMMER	COMMERCE BANK-COMMERCIAL CARDS	344477	289	09/27/2024	4-001-5-01-202	BOCC KAC/COC/WSU/ECON CONF, SO	103.00-	
648	COMMERCE BANK-COMMER	COMMERCE BANK-COMMERCIAL CARDS	344477	289	09/27/2024	4-001-5-01-213	BOCC KAC/COC/WSU/ECON CONF, SO	267.01	
648	COMMERCE BANK-COMMER	COMMERCE BANK-COMMERCIAL CARDS	344477	289	09/27/2024	4-001-5-02-301	CLERK OFC:TONER	360.00	
648	COMMERCE BANK-COMMER	COMMERCE BANK-COMMERCIAL CARDS	344477	289	09/27/2024	4-001-5-02-301	PLANNING/CLERK:SS:OFC SUPPLIES	45.04	
648	COMMERCE BANK-COMMER	COMMERCE BANK-COMMERCIAL CARDS	344477	289	09/27/2024	4-001-5-02-301	CLERK:FK:OFFICE SUPPLIES	288.17	
648	COMMERCE BANK-COMMER	COMMERCE BANK-COMMERCIAL CARDS	344477	289	09/27/2024	4-001-5-03-301	TREAS OFC/END OF MONTH MEAL	112.15	
648	COMMERCE BANK-COMMER	COMMERCE BANK-COMMERCIAL CARDS	344477	289	09/27/2024	4-001-5-03-301	TREAS:OFFICE SUPPLIES TREAS &	564.12	
648	COMMERCE BANK-COMMER	COMMERCE BANK-COMMERCIAL CARDS	344477	289	09/27/2024	4-001-5-04-203	ROD:TVL PRIA, BOOTH RENTAL,NEW	22.13	
648	COMMERCE BANK-COMMER	COMMERCE BANK-COMMERCIAL CARDS	344477	289	09/27/2024	4-001-5-04-211	ROD:TVL PRIA, BOOTH RENTAL,NEW	397.16	
648	COMMERCE BANK-COMMER	COMMERCE BANK-COMMERCIAL CARDS	344477	289	09/27/2024	4-001-5-04-301	ROD:TVL PRIA, BOOTH RENTAL,NEW	79.06	
648	COMMERCE BANK-COMMER	COMMERCE BANK-COMMERCIAL CARDS	344477	289	09/27/2024	4-001-5-05-202	EOC CJ,MW,MS,SH:VEH MAINT,UNIF	13.20	
648	COMMERCE BANK-COMMER	COMMERCE BANK-COMMERCIAL CARDS	344477	289	09/27/2024	4-001-5-05-205	EMS FIELD SUPPLY,UNIFORMS,CONT	4.48	
648	COMMERCE BANK-COMMER	COMMERCE BANK-COMMERCIAL CARDS	344477	289	09/27/2024	4-001-5-05-212	EMS FIELD SUPPLY,UNIFORMS,CONT	65.90	
648	COMMERCE BANK-COMMER	COMMERCE BANK-COMMERCIAL CARDS	344477	289	09/27/2024	4-001-5-05-216	EMS FIELD SUPPLY,UNIFORMS,CONT	352.30	
648	COMMERCE BANK-COMMER	COMMERCE BANK-COMMERCIAL CARDS	344477	289	09/27/2024	4-001-5-05-301	EOC CJ,MW,MS,SH:VEH MAINT,UNIF	14.87	
648	COMMERCE BANK-COMMER	COMMERCE BANK-COMMERCIAL CARDS	344477	289	09/27/2024	4-001-5-05-306	EOC CJ,MW,MS,SH:VEH MAINT,UNIF	1,329.98	
648	COMMERCE BANK-COMMER	COMMERCE BANK-COMMERCIAL CARDS	344477	289	09/27/2024	4-001-5-05-306	EOC CJ,MW,MS,SH:VEH MAINT,UNIF	10.30	
648	COMMERCE BANK-COMMER	COMMERCE BANK-COMMERCIAL CARDS	344477	289	09/27/2024	4-001-5-05-350	EMS FIELD SUPPLY,UNIFORMS,CONT	741.90	
648	COMMERCE BANK-COMMER	COMMERCE BANK-COMMERCIAL CARDS	344477	289	09/27/2024	4-001-5-05-350	EOC CJ,MW,MS,SH:VEH MAINT,UNIF	491.25	
648	COMMERCE BANK-COMMER	COMMERCE BANK-COMMERCIAL CARDS	344477	289	09/27/2024	4-001-5-05-381	EMS FIELD SUPPLY,UNIFORMS,CONT	2,175.30	
648	COMMERCE BANK-COMMER	COMMERCE BANK-COMMERCIAL CARDS	344477	289	09/27/2024	4-001-5-05-381	EOC CJ,MW,MS,SH:VEH MAINT,UNIF	423.73	
648	COMMERCE BANK-COMMER	COMMERCE BANK-COMMERCIAL CARDS	344477	289	09/27/2024	4-001-5-05-4	EOC CJ,MW,MS,SH:VEH MAINT,UNIF	770.76	
648	COMMERCE BANK-COMMER	COMMERCE BANK-COMMERCIAL CARDS	344477	289	09/27/2024	4-001-5-06-301	PLANNING:MJ:OFFICE SUPPLIES	35.53	
648	COMMERCE BANK-COMMER	COMMERCE BANK-COMMERCIAL CARDS	344477	289	09/27/2024	4-001-5-06-301	PLANNING/CLERK:SS:OFC SUPPLIES	45.83	
648	COMMERCE BANK-COMMER	COMMERCE BANK-COMMERCIAL CARDS	344477	289	09/27/2024	4-001-5-07-202	LVSO AA,JA,AB:TNG,CONTRACTUAL,	50.00	
648	COMMERCE BANK-COMMER	COMMERCE BANK-COMMERCIAL CARDS	344477	289	09/27/2024	4-001-5-07-202	LVSO OT3,JP,FP:TNG,AMMO,POSTAG	315.00	
648	COMMERCE BANK-COMMER	COMMERCE BANK-COMMERCIAL CARDS	344477	289	09/27/2024	4-001-5-07-202	LVSO AD:TRAINING, POLICE EQUIP	231.41	
648	COMMERCE BANK-COMMER	COMMERCE BANK-COMMERCIAL CARDS	344477	289	09/27/2024	4-001-5-07-208	LVSO AA,JA,AB:TNG,CONTRACTUAL,	36.00	
648	COMMERCE BANK-COMMER	COMMERCE BANK-COMMERCIAL CARDS	344477	289	09/27/2024	4-001-5-07-210	AT&T LVSO 1313	316.95	
648	COMMERCE BANK-COMMER	COMMERCE BANK-COMMERCIAL CARDS	344477	289	09/27/2024	4-001-5-07-211	KEMA CONF/MEMBERSHIP	23.80	
648	COMMERCE BANK-COMMER	COMMERCE BANK-COMMERCIAL CARDS	344477	289	09/27/2024	4-001-5-07-251	LVSO BC,KD,TF,SF:JAIL, UNIFORM	7.31	
648	COMMERCE BANK-COMMER	COMMERCE BANK-COMMERCIAL CARDS	344477	289	09/27/2024	4-001-5-07-251	LVSO BM:JAIL/EQUIP,SUPPLIES,TE	118.16	
648	COMMERCE BANK-COMMER	COMMERCE BANK-COMMERCIAL CARDS	344477	289	09/27/2024	4-001-5-07-301	LVSO JS,CW:POLICE/OFC EQUIP,AM	14.04	

START DATE: 09/21/2024 END DATE: 09/27/2024

					P. O. NUMBER	CHECK#					
648	COMMERCE	BANK-COMMER	COMMERCE	BANK-COMMERCIAL	CARDS	344477	289	09/27/2024	4-001-5-07-301	LVSO BM:JAIL/EQUIP,SUPPLIES,TE	142.36
648	COMMERCE	BANK-COMMER	COMMERCE	BANK-COMMERCIAL	CARDS	344477	289	09/27/2024	4-001-5-07-302	LVSO OT3,JP,FP:TNG,AMMO,POSTAG	19.29-
648	COMMERCE	BANK-COMMER	COMMERCE	BANK-COMMERCIAL	CARDS	344477	289	09/27/2024	4-001-5-07-305	LVSO JS,CW:POLICE/OFC EQUIP,AM	179.99
648	COMMERCE	BANK-COMMER	COMMERCE	BANK-COMMERCIAL	CARDS	344477	289	09/27/2024	4-001-5-07-305	LVSO BM:JAIL/EQUIP,SUPPLIES,TE	199.99
648	COMMERCE	BANK-COMMER	COMMERCE	BANK-COMMERCIAL	CARDS	344477	289	09/27/2024	4-001-5-07-350	LVSO BC,KD,TF,SF:JAIL, UNIFORM	344.00
648	COMMERCE	BANK-COMMER	COMMERCE	BANK-COMMERCIAL	CARDS	344477	289	09/27/2024	4-001-5-07-353	LVSO JS,CW:POLICE/OFC EQUIP,AM	69.93
648	COMMERCE	BANK-COMMER	COMMERCE	BANK-COMMERCIAL	CARDS	344477	289	09/27/2024	4-001-5-07-353	LVSO JS,CW:POLICE/OFC EQUIP,AM	573.75
648	COMMERCE	BANK-COMMER	COMMERCE	BANK-COMMERCIAL	CARDS	344477	289	09/27/2024	4-001-5-07-353	LVSO AD:TRAINING, POLICE EQUIP	2,790.98
648	COMMERCE	BANK-COMMER	COMMERCE	BANK-COMMERCIAL	CARDS	344477	289	09/27/2024	4-001-5-07-353	LVSO BM:JAIL/EQUIP,SUPPLIES,TE	71.80
648	COMMERCE	BANK-COMMER	COMMERCE	BANK-COMMERCIAL	CARDS	344477	289	09/27/2024	4-001-5-07-354	LVSO BC,KD,TF,SF:JAIL, UNIFORM	30.28
648	COMMERCE	BANK-COMMER	COMMERCE	BANK-COMMERCIAL	CARDS	344477	289	09/27/2024	4-001-5-07-354	KEMA CONF/MEMBERSHIP	42.72
648	COMMERCE	BANK-COMMER	COMMERCE	BANK-COMMERCIAL	CARDS	344477	289	09/27/2024	4-001-5-07-354	KEMA CONF/MEMBERSHIP	32.16
648	COMMERCE	BANK-COMMER	COMMERCE	BANK-COMMERCIAL	CARDS	344477	289	09/27/2024	4-001-5-07-356	LVSO JS,CW:POLICE/OFC EQUIP,AM	129.58
648	COMMERCE	BANK-COMMER	COMMERCE	BANK-COMMERCIAL	CARDS	344477	289	09/27/2024	4-001-5-07-356	LVSO OT3,JP,FP:TNG,AMMO,POSTAG	110.73
648	COMMERCE	BANK-COMMER	COMMERCE	BANK-COMMERCIAL	CARDS	344477	289	09/27/2024	4-001-5-07-357	LVSO BC,KD,TF,SF:JAIL, UNIFORM	248.66
648	COMMERCE	BANK-COMMER	COMMERCE	BANK-COMMERCIAL	CARDS	344477	289	09/27/2024	4-001-5-07-357	LVSO BM:JAIL/EQUIP,SUPPLIES,TE	172.79
648	COMMERCE	BANK-COMMER	COMMERCE	BANK-COMMERCIAL	CARDS	344477	289	09/27/2024	4-001-5-07-359	LVSO BC,KD,TF,SF:JAIL, UNIFORM	190.67
648	COMMERCE	BANK-COMMER	COMMERCE	BANK-COMMERCIAL	CARDS	344477	289	09/27/2024	4-001-5-07-359	LVSO BC,KD,TF,SF:JAIL, UNIFORM	25.18
648	COMMERCE	BANK-COMMER	COMMERCE	BANK-COMMERCIAL	CARDS	344477	289	09/27/2024	4-001-5-07-359	LVSO JS,CW:POLICE/OFC EQUIP,AM	103.78
648	COMMERCE	BANK-COMMER	COMMERCE	BANK-COMMERCIAL	CARDS	344477	289	09/27/2024	4-001-5-07-359	LVSO BM:JAIL/EQUIP,SUPPLIES,TE	619.35
648	COMMERCE	BANK-COMMER	COMMERCE	BANK-COMMERCIAL	CARDS	344477	289	09/27/2024	4-001-5-07-362	LVSO BM:JAIL/EQUIP,SUPPLIES,TE	47.40
648	COMMERCE	BANK-COMMER	COMMERCE	BANK-COMMERCIAL	CARDS	344477	289	09/27/2024	4-001-5-07-364	LVSO AA,JA,AB:TNG,CONTRACTUAL,	63.78
648	COMMERCE	BANK-COMMER	COMMERCE	BANK-COMMERCIAL	CARDS	344477	289	09/27/2024	4-001-5-09-202	BOCC KAC/COC/WSU/ECON CONF, SO	350.00
648	COMMERCE	BANK-COMMER	COMMERCE	BANK-COMMERCIAL	CARDS	344477	289	09/27/2024	4-001-5-11-202	CO ATTY:LG:CONF REG,LODGING,OF	795.00
648	COMMERCE	BANK-COMMER	COMMERCE	BANK-COMMERCIAL	CARDS	344477	289	09/27/2024	4-001-5-11-202	CO ATTY:LG:CONF REG,LODGING,OF	1,226.53
648	COMMERCE	BANK-COMMER	COMMERCE	BANK-COMMERCIAL	CARDS	344477	289	09/27/2024	4-001-5-11-202	CO ATTY:TT:KCDAA CONF REG X5	500.00
648	COMMERCE	BANK-COMMER	COMMERCE	BANK-COMMERCIAL	CARDS	344477	289	09/27/2024	4-001-5-11-301	CO ATTY:LG:CONF REG,LODGING,OF	111.01
648	COMMERCE	BANK-COMMER	COMMERCE	BANK-COMMERCIAL	CARDS	344477	289	09/27/2024	4-001-5-14-229	BG:SB:CUSHING JC CTHSE ANNEX,	446.03
648	COMMERCE	BANK-COMMER	COMMERCE	BANK-COMMERCIAL	CARDS	344477	289	09/27/2024	4-001-5-19-205	DIST CT - SC:DVD DRIVES,JURY M	92.01
648	COMMERCE	BANK-COMMER	COMMERCE	BANK-COMMERCIAL	CARDS	344477	289	09/27/2024	4-001-5-19-301	DIST CT JC:OFFICE SUPPLY	102.69
648	COMMERCE	BANK-COMMER	COMMERCE	BANK-COMMERCIAL	CARDS	344477	289	09/27/2024	4-001-5-19-301	DIST CT - SC:DVD DRIVES,JURY M	201.42
648	COMMERCE	BANK-COMMER	COMMERCE	BANK-COMMERCIAL	CARDS	344477	289	09/27/2024	4-001-5-23-202	ADMIN:JS:DUES,TRAINING,TRAVEL	801.00
648	COMMERCE	BANK-COMMER	COMMERCE	BANK-COMMERCIAL	CARDS	344477	289	09/27/2024	4-001-5-23-203	ADMIN:JS:DUES,TRAINING,TRAVEL	640.00
648	COMMERCE	BANK-COMMER	COMMERCE	BANK-COMMERCIAL	CARDS	344477	289	09/27/2024	4-001-5-23-211	ADMIN:JS:DUES,TRAINING,TRAVEL	897.72
648	COMMERCE	BANK-COMMER	COMMERCE	BANK-COMMERCIAL	CARDS	344477	289	09/27/2024	4-001-5-28-223	HUMAN RESOURCES:OPEN ENROLLMEN	368.20
648	COMMERCE	BANK-COMMER	COMMERCE	BANK-COMMERCIAL	CARDS	344477	289	09/27/2024	4-001-5-31-209	BG:NH:SHOP,MOWING,JC/CUSHING M	10.99
648	COMMERCE	BANK-COMMER	COMMERCE	BANK-COMMERCIAL	CARDS	344477	289	09/27/2024	4-001-5-31-290	BG:SB:CUSHING JC CTHSE ANNEX,	2,997.65
648	COMMERCE	BANK-COMMER	COMMERCE	BANK-COMMERCIAL	CARDS	344477	289	09/27/2024	4-001-5-31-297	BG:SB:CUSHING JC CTHSE ANNEX,	802.25
648	COMMERCE	BANK-COMMER	COMMERCE	BANK-COMMERCIAL	CARDS	344477	289	09/27/2024	4-001-5-31-301	BG:SB:CUSHING JC CTHSE ANNEX,	323.31
648	COMMERCE	BANK-COMMER	COMMERCE	BANK-COMMERCIAL	CARDS	344477	289	09/27/2024	4-001-5-31-312	BG:NH:SHOP,MOWING,JC/CUSHING M	299.00
648	COMMERCE	BANK-COMMER	COMMERCE	BANK-COMMERCIAL	CARDS	344477	289	09/27/2024	4-001-5-31-312	BG RT:CTHSE,ANNEX,JC	149.68
648	COMMERCE	BANK-COMMER	COMMERCE	BANK-COMMERCIAL	CARDS	344477	289	09/27/2024	4-001-5-31-314	BG RT:CTHSE,ANNEX,JC	17.17
648	COMMERCE	BANK-COMMER	COMMERCE	BANK-COMMERCIAL	CARDS	344477	289	09/27/2024	4-001-5-31-316	BG:NH:SHOP,MOWING,JC/CUSHING M	130.68
648	COMMERCE	BANK-COMMER	COMMERCE	BANK-COMMERCIAL	CARDS	344477	289	09/27/2024	4-001-5-31-322	BG - ZF:TOOLS,SUPPLIES,JCSD2,S	33.56
648	COMMERCE	BANK-COMMER	COMMERCE	BANK-COMMERCIAL	CARDS	344477	289	09/27/2024	4-001-5-31-391	BG:SB:CUSHING JC CTHSE ANNEX,	965.43
648	COMMERCE	BANK-COMMER	COMMERCE	BANK-COMMERCIAL	CARDS	344477	289	09/27/2024	4-001-5-32-209	BG:SB:CUSHING JC CTHSE ANNEX,	2,572.49
648	COMMERCE	BANK-COMMER	COMMERCE	BANK-COMMERCIAL	CARDS	344477	289	09/27/2024	4-001-5-32-297	BG:SB:CUSHING JC CTHSE ANNEX,	601.67
648	COMMERCE	BANK-COMMER	COMMERCE	BANK-COMMERCIAL	CARDS	344477	289	09/27/2024	4-001-5-32-391	BG - ZF:TOOLS,SUPPLIES,JCSD2,S	55.80
648	COMMERCE	BANK-COMMER	COMMERCE	BANK-COMMERCIAL	CARDS	344477	289	09/27/2024	4-001-5-32-391	BG:SB:CUSHING JC CTHSE ANNEX,	213.18
648	COMMERCE	BANK-COMMER	COMMERCE	BANK-COMMERCIAL	CARDS	344477	289	09/27/2024	4-001-5-32-391	BG:NH:SHOP,MOWING,JC/CUSHING M	289.20
648	COMMERCE	BANK-COMMER	COMMERCE	BANK-COMMERCIAL	CARDS	344477	289	09/27/2024	4-001-5-32-391	BG RT:CTHSE,ANNEX,JC	201.40
648	COMMERCE	BANK-COMMER	COMMERCE	BANK-COMMERCIAL	CARDS	344477	289	09/27/2024	4-001-5-33-209	BG:SB:CUSHING JC CTHSE ANNEX,	46.08

START DATE: 09/21/2024 END DATE: 09/27/2024

warrants by vendor

FMWARRPTR2	LEAVENWORTH COUNTY							9/26/24	16:51:42	
DCOX	WARRANT REGISTER - BY FUND / VENDOR							Page	4	
START DATE: 09/21/2024							END DATE: 09/27/2024			
TYPES OF CHECKS SELECTED: * ALL TYPES										
			P.O.NUMBER	CHECK#						
								*** VENDOR	551 TOTAL	340.45
66366	KANSAS GAS ACH	KANSAS GAS SERVICE	344392	285	09/23/2024	4-001-5-14-220	510614745 162863173 GAS TRANSP	649.36		
66366	KANSAS GAS ACH	KANSAS GAS SERVICE	344392	285	09/23/2024	4-001-5-32-392	510614745 162863173 GAS TRANSP	917.25		
66366	KANSAS GAS ACH	KANSAS GAS SERVICE	344392	285	09/23/2024	4-001-5-33-392	510614745 1562996 18 GAS TRANS	129.77		
66366	KANSAS GAS ACH	KANSAS GAS SERVICE	344392	285	09/23/2024	4-001-5-33-392	510614745 1562996 18 GAS TRANS	104.37		
								*** VENDOR	66366 TOTAL	1,800.75
1978	KRYGER GLA	KRYGER GLASS CO	344438	110685 AP	09/27/2024	4-001-5-07-213	WINDSHEILD REPAIR SHERIFF #103	49.95		
227	LABORATORY	LABORATORY CORPORATION OF AMER	344439	110686 AP	09/27/2024	4-001-5-07-219	15273495 LAB WORK AFTER CORREC	43.26		
227	LABORATORY	LABORATORY CORPORATION OF AMER	344439	110686 AP	09/27/2024	4-001-5-07-219	15273495 LAB WORK AFTER CORREC	120.34		
227	LABORATORY	LABORATORY CORPORATION OF AMER	344439	110686 AP	09/27/2024	4-001-5-07-219	15273495 LAB WORK AFTER CORREC	215.80		
227	LABORATORY	LABORATORY CORPORATION OF AMER	344439	110686 AP	09/27/2024	4-001-5-07-219	15273495 LAB WORK AFTER CORREC	75.72		
227	LABORATORY	LABORATORY CORPORATION OF AMER	344439	110686 AP	09/27/2024	4-001-5-07-219	15273495 LAB WORK AFTER CORREC	313.60		
227	LABORATORY	LABORATORY CORPORATION OF AMER	344439	110686 AP	09/27/2024	4-001-5-07-219	15273495 LAB WORK AFTER CORREC	158.23		
227	LABORATORY	LABORATORY CORPORATION OF AMER	344439	110686 AP	09/27/2024	4-001-5-07-219	15273495 LAB WORK AFTER CORREC	75.31		
227	LABORATORY	LABORATORY CORPORATION OF AMER	344439	110686 AP	09/27/2024	4-001-5-07-219	15273495 LAB WORK AFTER CORREC	281.69		
227	LABORATORY	LABORATORY CORPORATION OF AMER	344439	110686 AP	09/27/2024	4-001-5-07-219	15273495 LAB WORK AFTER CORREC	806.41		
								*** VENDOR	227 TOTAL	2,090.36
13225	LANSING PO	LANSING POLICE DEPT	344440	110687 AP	09/27/2024	4-001-5-11-503	LAW ENF FEES 23-1438	58.00		
4755	LEAV PAPER	LEAVENWORTH PAPER AND OFFICE S	344442	110689 AP	09/27/2024	4-001-5-07-359	SHERIFF JAIL SUPPLIES	115.00		
4755	LEAV PAPER	LEAVENWORTH PAPER AND OFFICE S	344442	110689 AP	09/27/2024	4-001-5-07-359	SHERIFF JAIL SUPPLIES	528.48		
4755	LEAV PAPER	LEAVENWORTH PAPER AND OFFICE S	344442	110689 AP	09/27/2024	4-001-5-07-359	SHERIFF JAIL SUPPLIES	590.05		
4755	LEAV PAPER	LEAVENWORTH PAPER AND OFFICE S	344442	110689 AP	09/27/2024	4-001-5-19-301	DIST CT CSO CREDIT FOR PRIOR T	59.10-		
4755	LEAV PAPER	LEAVENWORTH PAPER AND OFFICE S	344442	110689 AP	09/27/2024	4-001-5-19-301	DIST CT CSO WEEKLY PLANNER	49.98		
4755	LEAV PAPER	LEAVENWORTH PAPER AND OFFICE S	344442	110689 AP	09/27/2024	4-001-5-19-301	DIST CT CSO OFFICE SUPPLIES	1,200.20		
								*** VENDOR	4755 TOTAL	2,424.61
537	LEAV TIMES	CHERRYROAD MEDIA INC	344443	110690 AP	09/27/2024	4-001-5-06-218	21250 PUBLIC NOTICES	13.58		
537	LEAV TIMES	CHERRYROAD MEDIA INC	344443	110690 AP	09/27/2024	4-001-5-06-218	21250 PUBLIC NOTICES	54.12		
								*** VENDOR	537 TOTAL	67.70
710	LIPPERT MECHANICAL	LIPPERT MECHANICAL SERVICE LLC	344444	110691 AP	09/27/2024	4-001-5-33-209	6887515 SVC ORDRS - CUSHING	574.81		
710	LIPPERT MECHANICAL	LIPPERT MECHANICAL SERVICE LLC	344444	110691 AP	09/27/2024	4-001-5-33-209	6887515 SVC ORDRS - CUSHING	1,370.74		
710	LIPPERT MECHANICAL	LIPPERT MECHANICAL SERVICE LLC	344444	110691 AP	09/27/2024	4-001-5-33-209	6887515 SVC ORDRS - CUSHING	3,878.00		
								*** VENDOR	710 TOTAL	5,823.55
688	LOGICALIS INC	LOGICALIS	344445	110692 AP	09/27/2024	4-001-5-18-254	COLEAV01 MERARKI MAINTENANCE 3	5,349.99		
9762	LVPD	LEAVENWORTH POLICE DEPT	344446	110693 AP	09/27/2024	4-001-5-11-503	LAW ENF FEES 24-2768 & 4674 23	100.00		
9762	LVPD	LEAVENWORTH POLICE DEPT	344446	110693 AP	09/27/2024	4-001-5-11-503	LAW ENF FEES 24-2768 & 4674 23	100.00		
9762	LVPD	LEAVENWORTH POLICE DEPT	344446	110693 AP	09/27/2024	4-001-5-11-503	LAW ENF FEES 24-2768 & 4674 23	100.00		
								*** VENDOR	9762 TOTAL	300.00
2419	MCKESSON MEDICAL SUR	MCKESSON MEDICAL SURGICAL	344447	110694 AP	09/27/2024	4-001-5-07-219	4227550 INMATE MEDICAL SUPPLIE	284.51		
2059	MIDWEST OFFICE TECH	MIDWEST OFFICE TECHNOLOGY INC	344449	110696 AP	09/27/2024	4-001-5-11-303	OPL305_K COPIES CO ATTY	52.41		
2666	MISC REIMBURSEMENTS	ELOUISE JAHNKE	344453	110700 AP	09/27/2024	4-001-5-04-301	REIM MEETING SUPPLIES	31.51		
2666	MISC REIMBURSEMENTS	ALAN PHILLIPS	344450	110697 AP	09/27/2024	4-001-5-53-307	REIMB SAFETY BOOTS	165.00		
								*** VENDOR	2666 TOTAL	196.51
6579	PRIME HEALTHCARE	PRIME HEALTHCARE PHYSICIAN SER	344456	110703 AP	09/27/2024	4-001-5-07-219	INMATE HOSPITAL BILL	10.41		
7098	QUILL CORP	QUILL CORP	344457	110704 AP	09/27/2024	4-001-5-01-301	6310540 BOCC SUPPLIES	225.94		
7098	QUILL CORP	QUILL CORP	344457	110704 AP	09/27/2024	4-001-5-07-301	8333027 LV SHERIFF OFFICE SUPP	109.84		
7098	QUILL CORP	QUILL CORP	344457	110704 AP	09/27/2024	4-001-5-28-301	5367908 HR OFFICE SUPPLIES	42.08		
7098	QUILL CORP	QUILL CORP	344457	110704 AP	09/27/2024	4-001-5-28-301	5367908 HR OFFICE SUPPLIES	223.95		
7098	QUILL CORP	QUILL CORP	344457	110704 AP	09/27/2024	4-001-5-28-301	5367908 HR OFFICE SUPPLIES	4.79		
7098	QUILL CORP	QUILL CORP	344457	110704 AP	09/27/2024	4-001-5-28-301	5367908 HR OFFICE SUPPLIES	12.79		
								*** VENDOR	7098 TOTAL	619.39
103	RESTITUTIO									

warrants by vendor

warrants by vendor

FMWARRPTR2		LEAVENWORTH COUNTY							9/26/24	16:51:42
DCOX		WARRANT REGISTER - BY FUND / VENDOR							Page 6	
		START DATE: 09/21/2024 END DATE: 09/27/2024								
TYPES OF CHECKS SELECTED: * ALL TYPES										
			P.O.NUMBER	CHECK#						
648	COMMERCE BANK-COMMER	COMMERCE BANK-COMMERCIAL CARDS	344477	289	09/27/2024	4-108-5-00-280	HEALTH DEPT:CONTR,PSV,WIC,PHEP	1,284.96		
648	COMMERCE BANK-COMMER	COMMERCE BANK-COMMERCIAL CARDS	344477	289	09/27/2024	4-108-5-00-301	HEALTH DEPT:CONTR,PSV,WIC,PHEP	277.00		
648	COMMERCE BANK-COMMER	COMMERCE BANK-COMMERCIAL CARDS	344477	289	09/27/2024	4-108-5-00-302	HEALTH DEPT:CONTR,PSV,WIC,PHEP	14.73		
648	COMMERCE BANK-COMMER	COMMERCE BANK-COMMERCIAL CARDS	344477	289	09/27/2024	4-108-5-00-380	HEALTH DEPT:CONTR,PSV,WIC,PHEP	83.24		
648	COMMERCE BANK-COMMER	COMMERCE BANK-COMMERCIAL CARDS	344477	289	09/27/2024	4-108-5-00-384	HEALTH DEPT:CONTR,PSV,WIC,PHEP	7,628.29		
648	COMMERCE BANK-COMMER	COMMERCE BANK-COMMERCIAL CARDS	344477	289	09/27/2024	4-108-5-00-601	HEALTH DEPT:CONTR,PSV,WIC,PHEP	113.09		
648	COMMERCE BANK-COMMER	COMMERCE BANK-COMMERCIAL CARDS	344477	289	09/27/2024	4-108-5-00-606	WIC:JH	1,657.88		
648	COMMERCE BANK-COMMER	COMMERCE BANK-COMMERCIAL CARDS	344477	289	09/27/2024	4-108-5-00-606	HEALTH DEPT:CONTR,PSV,WIC,PHEP	178.66		
*** VENDOR 648 TOTAL								11,237.85		
575	US POSTAL SERVICE	US POSTAL SERVICE (QUADIENT-PO	344388	110660 AP	09/23/2024	4-108-5-00-302	AUGUST POSTAGE HEALTH/WIC	85.11		
575	US POSTAL SERVICE	US POSTAL SERVICE (QUADIENT-PO	344388	110660 AP	09/23/2024	4-108-5-00-606	AUGUST POSTAGE HEALTH/WIC	138.60		
*** VENDOR 575 TOTAL								223.71		
TOTAL FUND 108								11,461.56		
735	ARV - AMBULANCE	AMERICAN RESPONSE VEHICLES	344382	110654 AP	09/23/2024	4-115-5-00-436	2024 AMB VIN 1FDUF5HTXRDA19961	264,976.00		
735	ARV - AMBULANCE	AMERICAN RESPONSE VEHICLES	344418	110665 AP	09/27/2024	4-115-5-00-436	2024 AMBULANCE VIN 1FDUF5HT1RD	274,976.00		
*** VENDOR 735 TOTAL								539,952.00		
648	COMMERCE BANK-COMMER	COMMERCE BANK-COMMERCIAL CARDS	344477	289	09/27/2024	4-115-5-00-434	COA:COA:VEH MAINT,L&L,MOW BENE	1,330.95		
648	COMMERCE BANK-COMMER	COMMERCE BANK-COMMERCIAL CARDS	344477	289	09/27/2024	4-115-5-00-434	COA:VEH EQUIPMENT, VEH REPAIR	302.65		
*** VENDOR 648 TOTAL								1,633.60		
458	ROAD & BRIDGE	LEAV CO PUBLIC WORKS	344386	110658 AP	09/23/2024	4-115-5-00-434	CO ON AGING VEHICLE MAINTENANC	2,294.76		
TOTAL FUND 115								543,880.36		
648	COMMERCE BANK-COMMER	COMMERCE BANK-COMMERCIAL CARDS	344477	289	09/27/2024	4-119-5-00-253	ROD:TVL PRIA, BOOTH RENTAL,NEW	70.00-		
843	FIDLAR	FIDLAR	344429	110676 AP	09/27/2024	4-119-5-00-402	2010343 SCANING AGREEMENT M24-	1,175.05		
1768	VITAL RECORDS	VITAL RECORDS HOLDING, LLC	344474	110721 AP	09/27/2024	4-119-5-00-252	40004639 (MCI1) MKII SCANNER S	694.95		
TOTAL FUND 119								1,800.00		
648	COMMERCE BANK-COMMER	COMMERCE BANK-COMMERCIAL CARDS	344477	289	09/27/2024	4-126-5-00-321	COMMCORR JV SUPPLIES, FOOD	125.22		
648	COMMERCE BANK-COMMER	COMMERCE BANK-COMMERCIAL CARDS	344477	289	09/27/2024	4-126-5-00-321	COMM CORR RB:SUPPLIES, TOLLS	59.46		
*** VENDOR 648 TOTAL								184.68		
575	US POSTAL SERVICE	US POSTAL SERVICE (QUADIENT-PO	344388	110660 AP	09/23/2024	4-126-5-00-321	AUGUST POSTAGE ADULT COMM CORR	59.83		
TOTAL FUND 126								244.51		
361	HID GLOBAL	HID GLOBAL CORPORATION	344434	110681 AP	09/27/2024	4-130-5-00-2	179361 1/2 ANNUAL MAINT CONTRA	1,199.50		
TOTAL FUND 130								1,199.50		
4120	ACE IMAGEWEAR	AAA LAUNDRY & LINEN SUPPLY CO	344415	110662 AP	09/27/2024	4-133-5-00-215	9-64 4013-01993 UNIFORM RENTAL	321.69		
4120	ACE IMAGEWEAR	AAA LAUNDRY & LINEN SUPPLY CO	344415	110662 AP	09/27/2024	4-133-5-00-215	9-64 4013-01993 UNIFORM RENTAL	398.69		
4120	ACE IMAGEWEAR	AAA LAUNDRY & LINEN SUPPLY CO	344415	110662 AP	09/27/2024	4-133-5-00-312	9-64 4013-01993 UNIFORM RENTAL	238.06		
4120	ACE IMAGEWEAR	AAA LAUNDRY & LINEN SUPPLY CO	344415	110662 AP	09/27/2024	4-133-5-00-312	9-64 4013-01993 UNIFORM RENTAL	239.36		
*** VENDOR 4120 TOTAL								1,197.80		
25797	BERRY TRAC	BERRY TRACTOR & EQUIPMENT	344419	110666 AP	09/27/2024	4-133-5-00-227	9-48 066692 BROOM RENTAL TO 9.	3,000.00		
25797	BERRY TRAC	BERRY TRACTOR & EQUIPMENT	344419	110666 AP	09/27/2024	4-133-5-00-360	9-48 066692 BROOM RENTAL TO 9.	401.09		
*** VENDOR 25797 TOTAL								3,401.09		
4136	BRANDT FAB	BRANDT FABRICATING	344421	110668 AP	09/27/2024	4-133-5-00-360	MESH KNIT TARPS, ELECTRIC TARP	945.00		
648	COMMERCE BANK-COMMER	COMMERCE BANK-COMMERCIAL CARDS	344477	289	09/27/2024	4-133-5-00-201	9-45 JP,PW,JW	.96		
648	COMMERCE BANK-COMMER	COMMERCE BANK-COMMERCIAL CARDS	344477	289	09/27/2024	4-133-5-00-211	9-45 JP,PW,JW	701.46		
648	COMMERCE BANK-COMMER	COMMERCE BANK-COMMERCIAL CARDS	344477	289	09/27/2024	4-133-5-00-301	9-45 JP,PW,JW	143.77		
648	COMMERCE BANK-COMMER	COMMERCE BANK-COMMERCIAL CARDS	344477	289	09/27/2024	4-133-5-00-301	9-44 AA:ZE:VG:PARTS,FACILITY,T	445.09		
648	COMMERCE BANK-COMMER	COMMERCE BANK-COMMERCIAL CARDS	344477	289	09/27/2024	4-133-5-00-309	9-45 JP,PW,JW	1,035.09		
warrants by vendor										

FMWARRPTR2	LEAVENWORTH COUNTY							9/26/24	16:51:42
DCOX	WARRANT REGISTER - BY FUND / VENDOR							Page	7
START DATE: 09/21/2024 END DATE: 09/27/2024									
TYPES OF CHECKS SELECTED: * ALL TYPES									
			P.O.NUMBER	CHECK#					
648	COMMERCE BANK-COMMER	COMMERCE BANK-COMMERCIAL CARDS	344477	289	09/27/2024	4-133-5-00-309	9-44 AA:ZE:VG:PARTS,FACILITY,T	990.10	
648	COMMERCE BANK-COMMER	COMMERCE BANK-COMMERCIAL CARDS	344477	289	09/27/2024	4-133-5-00-311	9-44 AA:ZE:VG:PARTS,FACILITY,T	441.93	
648	COMMERCE BANK-COMMER	COMMERCE BANK-COMMERCIAL CARDS	344477	289	09/27/2024	4-133-5-00-312	9-44 AA:ZE:VG:PARTS,FACILITY,T	475.92	
648	COMMERCE BANK-COMMER	COMMERCE BANK-COMMERCIAL CARDS	344477	289	09/27/2024	4-133-5-00-360	9-45 JP,PW,JW	736.49	
648	COMMERCE BANK-COMMER	COMMERCE BANK-COMMERCIAL CARDS	344477	289	09/27/2024	4-133-5-00-360	9-44 AA:ZE:VG:PARTS,FACILITY,T	3,968.73	
648	COMMERCE BANK-COMMER	COMMERCE BANK-COMMERCIAL CARDS	344477	289	09/27/2024	4-133-5-00-364	9-45 JP,PW,JW	981.41	
648	COMMERCE BANK-COMMER	COMMERCE BANK-COMMERCIAL CARDS	344477	289	09/27/2024	4-133-5-00-364	9-44 AA:ZE:VG:PARTS,FACILITY,T	105.99	
648	COMMERCE BANK-COMMER	COMMERCE BANK-COMMERCIAL CARDS	344477	289	09/27/2024	4-133-5-00-365	9-44 AA:ZE:VG:PARTS,FACILITY,T	208.43	
648	COMMERCE BANK-COMMER	COMMERCE BANK-COMMERCIAL CARDS	344477	289	09/27/2024	4-133-5-00-365	9-44 AA:ZE:VG:PARTS,FACILITY,T	325.96	
648	COMMERCE BANK-COMMER	COMMERCE BANK-COMMERCIAL CARDS	344477	289	09/27/2024	4-133-5-00-365	9-44 AA:ZE:VG:PARTS,FACILITY,T	1,216.62	
648	COMMERCE BANK-COMMER	COMMERCE BANK-COMMERCIAL CARDS	344477	289	09/27/2024	4-133-5-00-440	9-45 JP,PW,JW	903.86	
648	COMMERCE BANK-COMMER	COMMERCE BANK-COMMERCIAL CARDS	344477	289	09/27/2024	4-133-5-00-440	9-45 JP,PW,JW	4,120.39	
648	COMMERCE BANK-COMMER	COMMERCE BANK-COMMERCIAL CARDS	344477	289	09/27/2024	4-133-5-00-440	9-44 AA:ZE:VG:PARTS,FACILITY,T	2,228.02	
*** VENDOR 648 TOTAL									19,030.22
3998	DREXEL TEC	DREXEL TECHNOLOGIES INC	344426	110673 AP	09/27/2024	4-133-5-00-208	9-50 28984 ON CALL ENGINEERING	40.25	
24441	E EDWARDS	E EDWARDS	344427	110674 AP	09/27/2024	4-133-5-00-364	9-51 130317 SAFETY BOOTS - J P	165.00	
212	EXAMINETICS	EXAMINETICS,INC	344428	110675 AP	09/27/2024	4-133-5-00-364	9-52 155443 MOBILE TESTING - H	2,085.00	
119	FINNEY & TURNIPSEED	FINNEY & TURNIPSEED TRANSPORTA	344430	110677 AP	09/27/2024	4-133-5-00-225	9-68 2024 BIENNIAL BR INSP/APP	41,400.00	
2588	FOLEY EQUIPMENT	FOLEY EQUIPMENT	344431	110678 AP	09/27/2024	4-133-5-00-360	9-53 016993 FUEL CAPS, STRIKER	92.06	
2588	FOLEY EQUIPMENT	FOLEY EQUIPMENT	344431	110678 AP	09/27/2024	4-133-5-00-360	9-53 016993 FUEL CAPS, STRIKER	273.07	
*** VENDOR 2588 TOTAL									365.13
70	FREESTATE EFT	FREESTATE ELECTRIC COOPERATIVE	344390	283	09/23/2024	4-133-5-00-251	9-47 ELEC SVC TONGIE QUARRY	61.52	
191	HOME DEPOT	HOME DEPOT USA	344435	110682 AP	09/27/2024	4-133-5-00-312	9-54 1111680 FILTERS, WIRE PLU	78.96	
1351	LEAV ASPHALT	LEAVENWORTH ASPHALT MATERIALS	344441	110688 AP	09/27/2024	4-133-5-00-362	9-55 495 BM2	4,571.48	
1351	LEAV ASPHALT	LEAVENWORTH ASPHALT MATERIALS	344441	110688 AP	09/27/2024	4-133-5-00-362	9-55 495 BM2	4,756.11	
1351	LEAV ASPHALT	LEAVENWORTH ASPHALT MATERIALS	344441	110688 AP	09/27/2024	4-133-5-00-362	9-55 495 BM2	3,922.59	
1351	LEAV ASPHALT	LEAVENWORTH ASPHALT MATERIALS	344441	110688 AP	09/27/2024	4-133-5-00-362	9-55 495 BM2	6,816.29	
1351	LEAV ASPHALT	LEAVENWORTH ASPHALT MATERIALS	344441	110688 AP	09/27/2024	4-133-5-00-362	9-55 495 BM2	6,398.64	
1351	LEAV ASPHALT	LEAVENWORTH ASPHALT MATERIALS	344441	110688 AP	09/27/2024	4-133-5-00-362	9-65 495 BM2	34,337.75	
1351	LEAV ASPHALT	LEAVENWORTH ASPHALT MATERIALS	344441	110688 AP	09/27/2024	4-133-5-00-362	9-65 495 BM2	8,878.27	
*** VENDOR 1351 TOTAL									69,681.13
537	LEAV TIMES	CHERRYROAD MEDIA INC	344443	110690 AP	09/27/2024	4-133-5-00-208	9-56 30313 BID NOTICE - ON-CAL	10.19	
232	MHC KENWORTH	MHC KENWORTH-OLATHE	344448	110695 AP	09/27/2024	4-133-5-00-360	9-57 95988 WATER PUMP KIT,FILT	236.81	
232	MHC KENWORTH	MHC KENWORTH-OLATHE	344448	110695 AP	09/27/2024	4-133-5-00-360	9-57 95988 WATER PUMP KIT,FILT	53.07	
232	MHC KENWORTH	MHC KENWORTH-OLATHE	344448	110695 AP	09/27/2024	4-133-5-00-360	9-57 95988 WATER PUMP KIT,FILT	308.26	
*** VENDOR 232 TOTAL									598.14
2666	MISC REIMBURSEMENTS	ISMAEL DALLAS LOPEZ	344451	110698 AP	09/27/2024	4-133-5-00-203	9-66 REIMB CDL LP & PHOTO	15.25	
2666	MISC REIMBURSEMENTS	JAMES SEXTON	344452	110699 AP	09/27/2024	4-133-5-00-203	9-67 REIMB CDL	41.00	
*** VENDOR 2666 TOTAL									56.25
1962	MOTOROLA	MOTOROLA	344454	110701 AP	09/27/2024	4-133-5-00-360	9-58 MICROPHONE - VINCE	69.14	
1123	POMPMIDWEST EFT	POMP'S TIRE SERVICE INC	344478	290	09/27/2024	4-133-5-00-309	9-59 1960724 TIRES	275.00	
1123	POMPMIDWEST EFT	POMP'S TIRE SERVICE INC	344478	290	09/27/2024	4-133-5-00-309	9-59 1960724 TIRES	1,051.36	
*** VENDOR 1123 TOTAL									1,326.36
418	PREMIER TRUCK	PENSKE COMMERCIAL VEHICLES US	344455	110702 AP	09/27/2024	4-133-5-00-360	9-60 8052255000 EQUIPMENT PART	75.72	
418	PREMIER TRUCK	PENSKE COMMERCIAL VEHICLES US	344455	110702 AP	09/27/2024	4-133-5-00-360	9-60 8052255000 EQUIPMENT PART	239.24	
418	PREMIER TRUCK	PENSKE COMMERCIAL VEHICLES US	344455	110702 AP	09/27/2024	4-133-5-00-360	9-60 8052255000 EQUIPMENT PART	239.24-	
418	PREMIER TRUCK	PENSKE COMMERCIAL VEHICLES US	344455	110702 AP	09/27/2024	4-133-5-00-360	9-60 8052255000 EQUIPMENT PART	307.98	
418	PREMIER TRUCK	PENSKE COMMERCIAL VEHICLES US	344455	110702 AP	09/27/2024	4-133-5-00-360	9-60 8052255000 EQUIPMENT PART	2.93	
*** VENDOR 418 TOTAL									386.63
668	TIREHUB	TIREHUB INC	344469	110716 AP	09/27/2024	4-133-5-00-309	9-61 407362 TIRES	505.92	
22972	TRANSFER STATION	TRANSFER STATION	344471	110718 AP	09/27/2024	4-133-5-00-214	9-62 ACCT 656 ROLL OFFYARD WAS	192.00	
575	US POSTAL SERVICE	US POSTAL SERVICE (QUADIENT-PO	344388	110660 AP	09/23/2024	4-133-5-00-301	9-38 AUGUST POSTAGE - PUBLIC W	93.22	

warrants by vendor

START DATE: 09/21/2024 END DATE: 09/27/2024

warrants by vendor

FMWARRPTR2		LEAVENWORTH COUNTY						9/26/24	16:51:42
DCOX		WARRANT REGISTER - BY FUND / VENDOR						Page	10
		START DATE: 09/21/2024 END DATE: 09/27/2024							
TYPES OF CHECKS SELECTED: * ALL TYPES									
				P.O.NUMBER	CHECK#				
361	HID GLOBAL	HID GLOBAL CORPORATION	344434	110681 AP	09/27/2024	4-194-5-00-2	16602 1/2 ANNUAL MAINT CONTRAC	1,199.50	
TOTAL FUND 194									1,199.50
5637	CLEARWATER ENTERPRIS	CLEARWATER ENTERPRISES,LLC	344384	110656 AP	09/23/2024	4-195-5-00-290	20642-0321A77493 GAS SERVCIE	2.02	
648	COMMERCE BANK-COMMER	COMMERCE BANK-COMMERCIAL CARDS	344477	289	09/27/2024	4-195-5-00-212	COMM CORR: KH - MISC EXP REIMB	15.49	
8686	EVERGY EFT	EVERGY KANSAS CENTRAL INC	344480	292	09/27/2024	4-195-5-00-290	ELEC SVC COMMUNITY CORRECTIONS	673.18	
66366	KANSAS GAS ACH	KANSAS GAS SERVICE	344392	285	09/23/2024	4-195-5-00-290	510614745 162863173 GAS TRANSP	92.83	
2	WATER DEPT	WATER DEPT	344389	110661 AP	09/23/2024	4-195-5-00-290	WATER SVC COMM CORR	58.47	
TOTAL FUND 195									841.99
1867	REDWOOD TOXICOLOGY	REDWOOD TOXICOLOGY LABORATORY	344458	110705 AP	09/27/2024	4-196-5-00-201	ACCT 112368 CONFIRMATION TESTS	117.33	
TOTAL FUND 196									117.33
648	COMMERCE BANK-COMMER	COMMERCE BANK-COMMERCIAL CARDS	344477	289	09/27/2024	4-198-5-18-201	KEMA CONF/MEMBERSHIP	360.00	
648	COMMERCE BANK-COMMER	COMMERCE BANK-COMMERCIAL CARDS	344477	289	09/27/2024	4-198-5-18-201	KEMA CONF/MEMBERSHIP	78.00	
648	COMMERCE BANK-COMMER	COMMERCE BANK-COMMERCIAL CARDS	344477	289	09/27/2024	4-198-5-18-201	EMPG:CM:LODGING - KEMA CONF	127.70	
*** VENDOR 648 TOTAL									565.70
TOTAL FUND 198									565.70
648	COMMERCE BANK-COMMER	COMMERCE BANK-COMMERCIAL CARDS	344477	289	09/27/2024	4-212-5-00-2	BG - ZF:TOOLS,SUPPLIES,JCSD2,S	67.80	
648	COMMERCE BANK-COMMER	COMMERCE BANK-COMMERCIAL CARDS	344477	289	09/27/2024	4-212-5-00-3	BG - ZF:TOOLS,SUPPLIES,JCSD2,S	46.98	
*** VENDOR 648 TOTAL									114.78
TOTAL FUND 212									114.78
648	COMMERCE BANK-COMMER	COMMERCE BANK-COMMERCIAL CARDS	344477	289	09/27/2024	4-218-5-00-2	BG - ZF:TOOLS,SUPPLIES,JCSD2,S	16.95	
TOTAL FUND 218									16.95
119	FINNEY & TURNIPSEED	FINNEY & TURNIPSEED TRANSPORTA	344430	110677 AP	09/27/2024	4-220-5-01-400	9-3 BR A-60 CONST INSP TO 9.19	947.05	
TOTAL FUND 220									947.05
353	UNITED WAY	UNITED WAY OF LEAVENWORTH COUN	344472	110719 AP	09/27/2024	4-510-2-00-905	EMPLOYEE CONTRIBUTIONS SEPTEMB	24.00	
353	UNITED WAY	UNITED WAY OF LEAVENWORTH COUN	344472	110719 AP	09/27/2024	4-510-2-00-905	EMPLOYEE CONTRIBUTIONS SEPTEMB	24.00	
*** VENDOR 353 TOTAL									48.00
TOTAL FUND 510									48.00
TOTAL ALL CHECKS									1,131,354.99

FUND SUMMARY

001	GENERAL	169,767.65
104	DRUG PROSECUTOR'S FUND	24.96
108	COUNTY HEALTH	11,461.56
115	EQUIPMENT RESERVE	543,880.36
119	ROD TECHNOLOGY	1,800.00
126	COMM CORR ADULT	244.51
130	CCH PERMITS	1,199.50
133	ROAD & BRIDGE	265,897.37
135	COMM CORR OPIOID	1,524.40
136	COMM CORR JUVENILE	192.02
137	LOCAL SERVICE ROAD & BRIDGE	1,191.56
138	JUV INTAKE & ASSESSMENT	210.48
144	PALS (PETS AND LOVING SENIORS	1,800.25
145	COUNCIL ON AGING	8,823.05
146	COUNTY TREASURER SPECIAL	3,615.77
160	SOLID WASTE MANAGEMENT	6,282.05
171	S TAX CAP RD PROJ: BONDS	37,267.00
172	AMERICAN RECOVERY PLAN	37,670.58
174	911	34,650.62
194	VIOLENT OFFENDERS	1,199.50
195	JUVENILE DETENTION	841.99
196	DRUG TEST & SUPERVISION FEES	117.33
198	SPECIAL GRANTS	565.70
212	SEWER DISTRICT 2: TIMBERLAKES	114.78
218	SEWER DIST #5	16.95
220	CAP IMPR: RD & BRIDGE	947.05
510	PAYROLL CLEARING	48.00
TOTAL ALL FUNDS		1,131,354.99

Consent Agenda
October 2, 2024
Cks dated 09/21-09/27

**Leavenworth County
Request for Board Action**

Date: 09/23/2024
To: Board of County Commissioners
From: Leavenworth County Sheriff

Department Head Approval: Andrew D. Dedeke, Sheriff

Additional Reviews as needed:

Budget Review ☐ Administrator Review ☐ Legal Review ☐

Action Requested: Approval of 2024 Edward J. Byrne (JAG) grant, requires BOCC approval and Chairman's signature for acceptance of the grant funds. This grant is a cooperative grant with City of Leavenworth and allows for the purchase of Law enforcement equipment.

Recommendation: Approval to allow presentation before BOCC in open meeting.

Analysis: N/A

Alternatives: Deny.

Budgetary Impact: None

- X ☐ Not Applicable
☐ Budgeted item with available funds
☐ Non-Budgeted item with available funds through prioritization
☐ Non-Budgeted item with additional funds requested

Total Amount Requested: None

Additional Attachments: BYRNE JAG Grant provides funds for LEO equipment, this is a Cooperative grant with LVPD.

THE STATE OF KANSAS

KNOW ALL BY THESE PRESENT

COUNTY OF LEAVENWORTH

CITY OF LEAVENWORTH

**INTERLOCAL AGREEMENT
BETWEEN THE CITY OF LEAVENWORTH, KANSAS AND COUNTY OF LEAVENWORTH, KANSAS**

2024 EDWARD BYRNE MEMORIAL JUSTICE ASSISTANCE GRANT

This Agreement is made and entered into this 24th day of September 2024, by and between The COUNTY of LEAVENWORTH, acting by and through its governing body, the County Commissioner, hereinafter referred to as COUNTY, and the CITY of LEAVENWORTH, acting by and through its governing body, the City Commission, hereinafter referred to as CITY, both of LEAVENWORTH County, State of KANSAS, witnessed:

WHEREAS, each governing body, in performing governmental functions or in paying for the performance of governmental functions hereunder, shall make that performance or those payments from current revenues legally available to that party: and

WHEREAS, each governing body finds that the performance of this Agreement is in the best interests of both parties, that the undertaking will benefit the public, and that the division of costs fairly compensates the performing party for the services or functions under this agreement: and

WHEREAS, the CITY agrees to provide the COUNTY \$10,000.00 from the 2024 BYRNE JAG award for the purchase of law enforcement equipment: and

WHEREAS, the CITY and COUNTY believe it to be in their best interests to reallocate the JAG funds.

NOW THEREFORE, the COUNTY and CITY agree as follows:

Section 1.

CITY agrees to pay COUNTY a total of \$10,000.00 of the total \$24,711.00 in JAG funds.

Section 2.

COUNTY agrees to use \$10,000.00 for the purchase of law enforcement equipment until September 30, 2025.

Section 3.

Nothing in the performance of this Agreement shall impose any liability for claims against COUNTY other than claims for which liability may be imposed by the Kansas Tort Claims Act.

Section 4.

Nothing in the performance of this Agreement shall impose any liability for claims against CITY other than claims for which liability may be imposed by the Kansas Tort Claims Act.

Section 5.

Each party to this agreement will be responsible for its own actions in providing services under this agreement and shall not be liable for any civil liability that may arise from the furnishing of the services by the other party.

Section 6.

The parties to this Agreement do not intend for any third party to obtain a right by virtue of this Agreement.

Section 7.

By entering into this Agreement, the parties do not intend to create any obligations express or implied other than those set out herein; further, this Agreement shall not create any rights in any party not a signatory hereto.

CITY OF LEAVENWORTH, KANSAS

COUNTY OF LEAVENWORTH, KANSAS

Patrick R. Kitchens
Interim City Manager, City of Leavenworth

Jeff Culbertson
Chairman, Board of County Commissioners

ATTEST: APPROVED AS TO FORM:

David E. Waters
City of Leavenworth Attorney

Mark Loughry
Leavenworth County Administrator

Leavenworth County Request for Board Action

Date: September 23, 2024
To: Board of County Commissioners
From: Larry Malbrough, Director of Information Systems

Additional Reviews as needed:

☒ Administrator ☒ County Clerk

Server Virtualization Project

Action Requested:

Authorize purchase of IBM Power 10 server and professional services.

Recommendation:

Award the IBM hardware and software licensing to Sirius, the low bidder, and engage FSC for professional services for an amount not to exceed \$42,900.30.

Background:

This IBM server hosts the software suite known as Patriot, which is used by the Clerk's Office, Treasurer's Office and Personal Property. This solution encompasses financial management, budget, tax, oil & gas, personal property, antique vehicles, etc.

Patriot software requires an IBM server running a proprietary IBM operating system. The county has used this type of solution for over 25 years.

Analysis:

The current server is eight years old. It is still performing well, however, it is a discontinued product. At the end of this year, it will no longer be qualified for operating system updates or support from IBM. Failure to keep the hardware and software updated would lead to the current system being unsuitable to host the Patriot software.

Quotes for the IBM hardware and software licensing were requested from two authorized resellers:

Sirius (CDW)	\$37,900.30
Insight Direct	\$43,098.24

I.S. desires to utilize Five Star Consulting (FSC) for deployment of the new server and migrating Patriot software and county data. FSC is a small business operated by an individual with over thirty years of experience with IBM servers and has supported Leavenworth County's Patriot software solution since the 90s.

Professional Services	Five Star Consulting	\$5,000.00
-----------------------	----------------------	------------

Recommendation: Award the IBM hardware and software licensing to Sirius, the low bidder, and engage FSC for professional services for a total project cost of \$42,900.30.

Alternatives:

None.

Budgetary Impact:

- ☐ Not Applicable
- ☒ Equipment reserve items with available equipment reserve funds
- ☐ Non-Budgeted item with available funds through prioritization
- ☐ Budgeted item with available funds

Total Amount Requested:

\$42,900.30

Additional Attachments:

Leavenworth County Request for Board Action

Date: October 2, 2024

To: Board of County Commissioners

From: Monica Swigart, Human Resources

Additional Reviews as needed:

Budget Review ☐ **Administrator Review** ☒ **Legal Review** ☒

Action Requested: Approval of the Wellness Incentive Policy effective 10-1-2024

Recommendation: Approval

Analysis: In an effort to evaluate the County's health and other insurance plans the County Administrator formed a wellness committee consisting of representation from the Council on Aging, Public Works, EMS/Health Department, Sheriff's Office and the County Administrator. This committee met several times throughout 2024 to explore ideas to better engage county employees in taking care of their health.

The committee came up with The Wellness Incentive Policy to further support employees with rising healthcare costs while incentivizing healthy habits of regular medical, dental and vision evaluations. The concept was presented to the BOCC during the insurance renewal process and was well received. The attached policy formalizes the concept of wellness incentives. The feedback from employees so far has been very positive.

Alternatives: Deny

Budgetary Impact:

- ☐ Not Applicable
- ☒ Budgeted item with available funds
- ☒ Non-Budgeted item with available funds through prioritization
- ☐ Non-Budgeted item with additional funds requested

Total Amount Requested:

Additional Attachments: Wellness Incentive Policy

SUBJECT	ISSUED BY	EFFECTIVE DATE	REVISION
Wellness Incentive Policy	BOCC	10/1/2024	

STATEMENT:

The Leavenworth Board of County Commissioners (BOCC) are committed to supporting employee health and benefit programs. They recognize that employees are more likely to engage in healthy programs and remain employed with employers who offer comprehensive benefits.

Therefore, the BOCC wishes to implement the following policy.

POLICY:

Leavenworth County will offer a wellness incentive to any employee who is actively enrolled in the health insurance plan offered by the County; and who also completes and accumulates the required wellness credits and submits the required documentation during the submittal period each year.

Incentive: Employees who meet the qualifications will receive a \$50.00 monthly reduction to the current health insurance premium/cost for employee only and a \$100.00 monthly reduction in premium/cost if both the employee and spousal equivalent (adult member) are enrolled in the County health plan and both meet the qualifications. For the HDHP Employee Plan ONLY, the \$50.00 incentive will be deposited into the employee's health savings account. The employee must earn the incentive for the spousal equivalent to be eligible to earn the incentive. The reduction in premium will begin with the pay period following when the qualifications have been met and will continue for the remainder of the current benefit plan year ending September 30.

Qualifications: To receive the incentive, employees must submit the incentive credits sheet and required documentation, to the Human Resources Department within the submittal period each year. Activities and exams must be dated within 12 months of the submittal to count as valid credits. The submittal period is the first 90 days of employment for all new hires OR the first 90 days of the new benefit year (currently October 1 – December 31). The employee and spousal equivalent must re-qualify annually to continue to receive the incentive.

Chairmen, Board of County Commissioners

Date of Adoption

Leavenworth County Request for Board Action

Date: Oct 2, 2024

To: Board of County Commissioners

From: Jamie Miller

Additional Reviews as needed:

Budget Review ☐ **Administrator Review** ☒ **Legal Review** ☒

Action Requested: Approve occupancy agreement with Leavenworth City Fire and EMS

Recommendation: Approval

Analysis: The City of Leavenworth is replacing their fire station #3. During the time of this replacement the fire department will be displaced and need to find an alternate location to continue operations. The fire department has reached out to EMS requesting to co-occupy within our station #1 on Hughes road. As we would be able to temporarily accommodate this request, an occupancy agreement was drafted. This is utilizing similar language as the current station #4 agreement with Fairmount Twp. Fire. Authorizing this agreement would allow the city to maintain a response area close to the current location of their fire station #3 at Limit and 2nd ave.

Budgetary Impact:

- ☒ Not Applicable
- ☐ Budgeted item with available funds
- ☐ Non-Budgeted item with available funds through prioritization
- ☐ Non-Budgeted item with additional funds requested

Additional Attachments: Occupancy Agreement sign by the city of Leavenworth

OCCUPANCY AGREEMENT

This AGREEMENT is made and entered into this __ day of ____, 2024, by and between the City of Leavenworth, Kansas (hereinafter City) as the governing board of the City of Leavenworth Fire Department, (hereinafter FD), and the Board of County Commissioners of Leavenworth, County, Kansas, (hereinafter County), as the governing board of Leavenworth County Emergency Medical Service, (hereinafter EMS).

ARTICLE I – GRANT OF AGREEMENT

County, in consideration of the agreements to be performed and observed by the City, FD and EMS, does hereby authorize occupancy and limited access to the FD the property described herein in Article IV and knowns as the Station or Premises.

ARTICLE II – TERM OF THE AGREEMENT

The term of this Agreement shall begin on _____ 2024 . The agreement shall be for a period of (1) year, subject to the terms and conditions hereinafter contained. Provided the City or FD is not in default of any of the terms of this AGREEMENT, this agreement may be renewed for one (1) additional ninety (90) day term. All notices shall be in writing to the other party and shall be effective when delivered either by registered or certified mail or in person to the other party's Clerk.

ARTICLE III – DETERMINATION OF RENT

FD will not be assessed rent for the duration of this agreement unless determined at a later time by the County. The County shall notify FD no less than 90 days of its intent to assess rent.

ARTICLE IV – BUILDING SPACE SUBJECT TO AGREEMENT

EMS shall provide and maintain such building space located at address 5175 Hughes Rd, Leavenworth, KS 66048, generally described and designated as Leavenworth County EMS Station #1 (hereinafter “Station”) as would reasonably be required.

EMS shall make available to FD, within the Station, the following: sleeping quarters/accommodations for two (3) FD employees; inside garage space for (1) fire apparatus; and access to EMS shared living space, including but not limited to, the kitchen, day room and restroom.

ARTICLE V – RIGHT OF ENTRY

EMS shall have the right to enter upon the Premises at reasonable hours to inspect the same, provided EMS shall not thereby unreasonably interfere the FD business on the Premises.

ARTICLE VI – USE AND OCCUPANCY

EMS shall occupy said portion of the station that is necessary to carry out the functions of EMS, and EMS shall have the lawful use and occupancy of the assigned portion of the Station. EMS shall defend and protect by whatever actions may be reasonably necessary that use and occupancy.

The parties agree that EMS has general use of the Station and that FD’s use of the agreed area is set out in Article IV on this Agreement. FD agrees to defend and protect, by reasonable means the use and occupancy of the agreed upon area.

EMS hereby expressly agrees that the use and occupancy of the station by FD require secured access to the station and the ability to respond in emergency situations, and FD and its

employees hereby expressly agree to cooperate with the EMS to provide security and protect the station and to ensure that emergency equipment and access is not hindered or prevented.

The FD hereby agree to peaceably surrender the Station at the end of the term of this agreement, or upon termination of this agreement in the same condition as when FD took occupancy, allowing for reasonable use and wear, acts of God, and other causes beyond the control of FD.

ARTICLE VII – BUILDING SECURITY AND ACCESS

FD hereby acknowledge EMS provides, owns, and operates a security system for the Station and that EMS has policies, procedures in place to ensure the security of the Station. FD agrees to follow all procedures set forth by EMS for access into the Station. Specifically, FD agrees to purchase access cards, programmed by EMS, for each of its employees. These cards will be for entry into the Station. Such cards are not to be given or assigned to any other individual without the express written permission of EMS.

FD further agrees only its employees shall be allowed access into the Station.

FD shall maintain an updated list of its employees with EMS.

Failure to abide by the Security procedures set in place by EMS voids all terms of this agreement and would allow EMS to exercise the right of termination of this AGREEMENT.

ARTICLE VIII – CARE AND MAINTENANCE

FD hereby agree to use the Station only for the purposes intended and shall use reasonable diligence in the care and use of the Station. FD shall not allow the Station to suffer

deterioration or waste, normal wear and tear excepted, and shall not hinder nor unreasonably interfere with the use and occupancy of EMS in these portions of the Station occupied by EMS.

FD shall not erect make any alterations or improvements in or upon the structural operation of the station without the express prior written consent of EMS. Should FD seek to improve, modify or otherwise change the Station, FD shall obtain permission from the County and EMS prior to making any alternations or improvements of the station. Any excessive maintenance or damage caused by FD will be assessed to FD in writing and reimbursement will be sought for such claims

EMS shall be responsible for, and shall immediately make, any and all structural repairs and maintenance necessary for the intended use and occupancy at the Station. If structural repairs or maintenance issues force the Station to be vacated, both parties will work to find appropriate temporary housing.

ARTICLE IX – INSURANCE

FD shall obtain and maintain all necessary insurance to cover all vehicles, property, equipment and supplies kept at the Station. A copy of such policy shall be provided to EMS. Should any property belonging to FD be damaged or lost, no claim shall be made against the County's and/or EMS's insurance policy.

FD shall have and maintain adequate and sufficient insurance to cover any injuries to FD employees that might occur at the Station. FD shall name the County and EMS as an additional insured on the insurance policy during the pendency of this Occupancy Agreement. A copy of such insurance shall be provided to EMS. To the extent permitted by law, FD agrees to hold harmless and indemnify EMS from any such claim.

EMS shall provide adequate fire and extended coverage insurance for the Station but shall not be required to maintain coverage for the contents belonging to FD.

ARTICLE X – EQUIPMENT AND OPERATIONS

The FD shall provide all necessary personnel supplies and equipment required for the operations of their department. It is agreed between the parties that EMS employees shall remain employees of the County, and FD employees shall remain employees of the City. Salaries and all employee benefits, if any, shall be provided by each separate party, to the respective employees.

Both FD and EMS further agree, if any operational problems or issues arise, they will be discussed between the Chief of the FD and the Director of EMS for resolution. Should any issue and/or problems remain after such discussion, the problem shall be referred to the County and City Commission for discussion and resolution.

ARTICLE XI – IDEMNIFICATOIN

To the extent permitted by law and without waiving any of the immunities as set out under the Kansas Tort Claims Act, FD agrees to exculpate, indemnify, and hold harmless the County, EMS, its employees, officers and authorized representatives, from any and all claims, costs, damages, expenses, suits, judgments, losses, penalties, settlements, charges, professional fees, or other expenses or liabilities, whether false, fraudulent, meritless, or meritorious of every kind and character arising out of, or relating to, the FD performance of its service under this agreement. FD further agrees to investigate, handle, respond, to provide defense for, defend any such claims and its sole expense and agrees to bear all other costs and expenses related thereto, even if such claims are groundless, false or fraudulent.

To the extent permitted by law and without waiving any of the immunities set out under the Kansas Tort Claims Act, EMS agrees to save exculpate, indemnify, and hold harmless the City, FD, its employees, officers, and authorized representatives harmless from any and all claims, costs, damages, expenses, suits, judgements, losses, penalties, settlements, charges, professional fees, or other expenses or liabilities, whether false, fraudulent, meritless, or meritorious of every kind and character arising out of, or relating to, the performance of any and all obligations it may be required to carry out under this Agreement. EMS further agrees to investigate, handle, respond, to provide defense for, defend any such claims and its sole expense and agrees to bear all other costs and expenses related thereto, even if such claims are groundless, false or fraudulent.

ARTICLE XII – ASSIGNMENT

It is understood and agreed that all rights and privileges of each party arising out of this agreement shall not be transferred assigned or conveyed without written consent of the other party.

ARTICLE XIII – AMENDMENT

Any and all provisions of this agreement may be amended by written addendum mutually agreed-upon and signed by all the parties hereto.

ARTICLE XIV – GOVERNING LAW

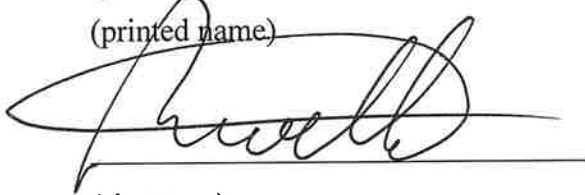
This agreement shall be governed by enforce it and construed in accordance with the laws of the state of Kansas.

ARTICLE XV – SEVERABILITY AND AMENDMENT

It is understood and agreed that all rights and privileges of each party arising out of this agreement shall not be transferred assigned or conveyed without written consent of the other party. Any and all provisions of this agreement may be amended by written addendum mutually agreed-upon and signed by the parties are two. In the event any or more of the provisions of this agreement shall be invalid illegal or enforceable in any respect the validity legality enforceability of the remaining provisions shall not in any way be affected or impaired.

Patrick R. Kilders

(printed name)



(signature)

City of Leavenworth

Representative

Jeff Culbertson, Chairman

(signature)

Leavenworth Board Of County

Commissioners Representative

Leavenworth County Request for Board Action

Date: Oct 2, 2024

To: Board of County Commissioners

From: Jamie Miller

Additional Reviews as needed:

Budget Review ☐ Administrator Review ☐ Legal Review ☐

Action Requested: Approve the EMS Director to place the order for the 2026 and 2027 replacement ambulances

Recommendation: Approval

Analysis: Replacing ambulances is part of our budgeted Fleet replacement process. Unfortunately, due to build times and factory lag in production, ambulance delivery is approximated at 900-1080 days. The earliest delivery potential is not until 2027/2028 with this production schedule. We as an organization need to stay on top of the ordering and replacement of the ambulances as this is core of our service. By ordering these units now we will lock in the pricing for the (2) units.

Budgetary Impact:

- ☐ Not Applicable
- ☒ Budgeted item with available funds
- ☐ Non-Budgeted item with available funds through prioritization
- ☐ Non-Budgeted item with additional funds requested

Total Amount Requested: \$332,969.59 per unit

Additional Attachments:

Project Fees



Description	Price
2027 AEV Traumahawk Type I Custom Ambulance 172x95x72 Ford F550, LWB, 4x4, Diesel	\$340,669.59
Less AEV, Ford, & ARV Discounts	- \$7,700.00

Total **\$332,969.59**

Terms are net on delivery or active lease purchase.
Delivery will be 900-1080 days after approval of the work order confirmation.

No deferred maintenance allowed on trade-ins

Proposal Includes

- Delivery
- Custom 3m 780 Reflective Graphics
- Weather Tech - Floor Mats for F-Series...BLACK
- Technimount Bracket Only Pro Series 35 HD
- Technimount Surface Base Standard Size Base Only. Universal
- Mounting of Customer Supplied Stryker PowerLOAD
- HGAC Cooperative Purchasing Program

**Leavenworth County
Request for Board Action
Resolution 2024-24
Rezoning from RR-2.5 to R-1(43)**

Date: October 2, 2024
To: Board of County Commissioners
From: Planning & Zoning Staff

Department Head Review: John Jacobson, Reviewed

Additional Reviews as needed:

Budget Review ☐ **Administrator Review** ☒ **Legal Review** ☒

Action Requested:

Chairman, I move to adopt Resolution 2024-24 and approve the rezoning as outlined in Case DEV-24-110 based on the findings of the Golden Factors, as set forth in the Staff Report and as substantiated by the findings of fact as adopted by the Planning Commission.

Analysis: The applicants are requesting a rezoning from Rural-Residential 2.5 to Residential 1(43). The Comprehensive Plan identifies the future land use of this area as Residential 3 units per acre. While Staff would typically recommend denial of a request that does not conform to the future land use, Staff recommends approval for the following reasons:

1. The requested use is less dense than the future land use designation.
2. The nearest city is located less than a mile, however we are unsure of the nearest sewer connection.

Planning Commission Recommendation: The Planning Commission voted 4-3 (2 absent) to recommend approval of Case No. DEV-24-110 (Resolution 2024-24) rezoning request from RR-2.5 to R-1(43).

Alternatives:

1. Approve case DEV-24-110 (Resolution 2024-24), Rezoning Request from RR-2.5 to R-1(43) with Findings of Fact; or
2. Deny case DEV-24-110 (Resolution 2024-24), Rezoning Request RR-2.5 to R-1(43) with Findings of Fact; or
3. Revise or modify the Planning Commission Recommendation to Resolution 2024-24, Rezoning Request from RR-2.5 to R-1(43) with Findings of Fact; or
4. Remand the case back to the Planning Commission.

Budgetary Impact:

- ☒ Not Applicable
- ☐ Budgeted item with available funds
- ☐ Non-Budgeted item with available funds through prioritization
- ☐ Non-Budgeted item with additional funds requested

Total Amount Requested:

\$0.00

Additional Attachments: Staff Report, Planning Commission Minutes

LEAVENWORTH COUNTY
PLANNING COMMISSION
STAFF REPORT

CASE NO: DEV-24-110 Twin Ventures Rezone

September 11, 2024

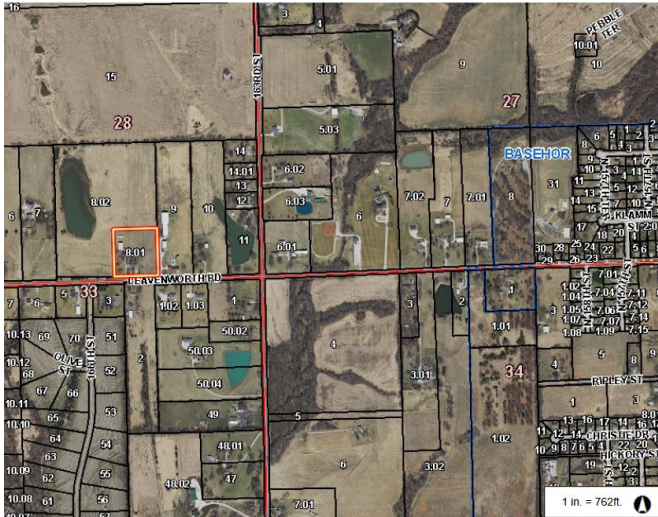
REQUEST: Public Hearing Required

☒ ZONING AMENDMENT ☐ SPECIAL USE PERMIT
☐ TEMPORARY SPECIAL USE PERMIT

STAFF REPRESENTATIVE:

JOSH SCHWEITZER
Development Planner

SUBJECT PROPERTY: 16476 Leavenworth Rd.



APPLICANT/APPLICANT AGENT:

Jeremy Ressler
18902 174th St
Tonganoxie, KS 66086

PROPERTY OWNER:

Twin Ventures
18902 174th St
Tonganoxie, KS 66086

CONCURRENT APPLICATIONS:

N/A

LAND USE

ZONING: RR-2.5 to R-1-43

FUTURE LAND USE DESIGNATION:
RESIDENTIAL 3-UNITS PER ACRE

LEGAL DESCRIPTION:

Lot 1, Rainmaker Ranch Addition, a subdivision in Leavenworth County, Kansas.

SUBDIVISION: Rainmaker Ranch Addition

FLOODPLAIN: N/A

STAFF RECOMMENDATION: APPROVAL

ACTION OPTIONS:

1. Recommend approval of Case No. DEV-24-110, Rezone for Twin Ventures, to the Board of County Commission, with or without conditions; or
2. Recommend denial of Case No. DEV-24-110, Rezone for Twin Ventures, to the Board of County Commission for the following reasons; or
3. Continue the hearing to another date, time, and place.

PROPERTY INFORMATION

PARCEL SIZE: 4.40 ACRES

PARCEL ID NO:
158-28-0-00-00-008.01

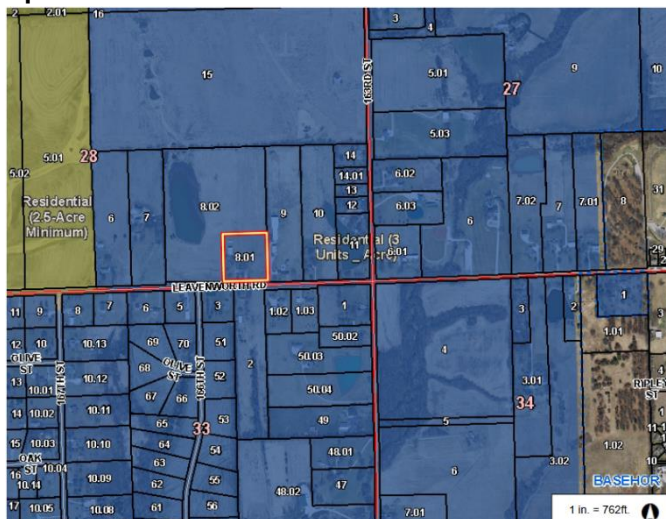
BUILDINGS:
Existing House and Outbuildings

PROJECT SUMMARY:

Request to rezone one parcel at 16476 Leavenworth Rd.
(PID: 158-28-0-00-00-008.01) from RR-2.5 to R-1(43).

ACCESS/STREET:
Leavenworth Rd. Collector, PAVED,
±28' WIDE

Location Map: FUTURE LAND USE MAP



UTILITIES

SEWER: SEPTIC

FIRE: FAIRMOUNT

WATER: CWD 1

ELECTRIC: EVERGY

NOTICE & REVIEW:

STAFF REVIEW: 9/3/2024

NEWSPAPER NOTIFICATION:
8/21/2024

NOTICE TO SURROUNDING
PROPERTY OWNERS:
8/21/2024

FACTORS TO BE CONSIDERED: <i>Type content in each if necessary (delete this afterwards)</i>		
The following factors are to be considered by the Planning Commission and the Board of County Commissioners when approving or disapproving this Rezone request:	Met	Not Met
1. Character of the Neighborhood: <i>Density:</i> Surrounding parcels range in size from 1 acre to more than 24 acres. The area is not densely populated. <i>Nearby City Limits:</i> Basehor is less than 1 mile to the East. <i>Initial Growth Management Area:</i> This parcel is located within the Rural Growth Area.	X	
2. Zoning and uses of nearby property: <i>Adjacent Uses:</i> Most of the adjacent parcels are residential and agricultural in nature. <i>Adjacent Zoning:</i> All adjacent properties are zoned RR-2.5. However, there are approximately 4 lots to the East of the subject property that is less than 1.5 acres.	X	X
3. Suitability of the Property for the uses to which it has been restricted: The property is suitable for rural residences and agricultural uses.	X	
4. Extent to which removal of the restrictions will detrimentally affect nearby property: <i>Nearby properties are unlikely to be negatively impacted as the proposed rezoning remains rural residential.</i>	X	
5. Length of time the property has been vacant as zoned: <input type="checkbox"/> Vacant: <input checked="" type="checkbox"/> Not Vacant:	X	
6. Relative gain to economic development, public health, safety and welfare: The rezoning does not impact economic development, public health, safety or welfare.	X	
7. Conformance to the Comprehensive Plan: <i>Future Land Use Map: Residential 3 Units Per Acre</i> <i>Section 4 Land Use and Development Plan Strategies: The proposed use is not compatible with the future land use designation.</i>	X	

STAFF COMMENTS:

The applicants are requesting a rezoning from Rural-Residential 2.5 to Residential 1(43). The applicant is proposing to split off approximately 1.5 acres for his son. The Comprehensive Plan identifies the future land use of this area as *Residential 3 units per acre*. While Staff would typically recommend denial of a request that does not conform to the future land use, Staff recommends approval for the following reasons:

1. The requested use is less dense than the future land use designation.
2. The nearest city is located less than a mile, however we are unsure of the nearest sewer connection.

ATTACHMENTS:

- A: Application & Narrative
- B: Zoning Map
- C: Memorandums

REZONING APPLICATION
Leavenworth County Planning Department
300 Walnut, St., Suite 212
County Courthouse
Leavenworth, Kansas 66048
913-684-0465

Office Use Only

Township: _____ Date Received: _____
Planning Commission Date _____
Case No. _____ Date Paid _____
Zoning District _____ Comprehensive Plan Land Use Designation _____

APPLICANT/AGENT INFORMATION

NAME Twin Ventures, LLC
ADDRESS 18902 174th St
CITY/ST/ZIP Tonganoxie, KS 66066
PHONE 913-230-0062
EMAIL jeremyressler@gmail.com
CONTACT PERSON Jeremy Ressler

OWNER INFORMATION (If different)

NAME _____
ADDRESS _____
CITY/ST/ZIP _____
PHONE _____
EMAIL _____
CONTACT PERSON _____

PROPOSED USE INFORMATION

Proposed Land Use ~~Commercial~~ single family residence
Current Zoning R2.5 Requested Zoning R143
Reason for Requesting Rezoning Add an additional home site for my son.

PROPERTY INFORMATION

Address of Property 16476 Leavenworth RD Basehor, KS 66007
Parcel Size 43/1 Acres
Current use of the property single family
Present Improvements or structures Home & Barn on existing
PID R21666

I, the undersigned am the (owner) (duly authorized agent), (Circle One) of the aforementioned property situated in the unincorporated portion of Leavenworth County, Kansas. By execution of my signature, I do hereby officially apply for rezoning as indicated above.

Signature _____

Date 8/13/2024

ATTACHMENT A

ENTERED IN TRANSFER RECORD IN
MY OFFICE THIS DAY 09/08/2023

Janet Klammer
COUNTY CLERK

Doc #: 2023R06609
TERRILOIS MASHBURN
REGISTER OF DEEDS
LEAVENWORTH COUNTY, KANSAS
RECORDED ON:
09/08/2023 04:25:30 PM
RECORDING FEE: 38.00
PAGES: 2

Continental Title Company: 23454531

Trustee's Deed

This indenture, made this 1 day of September, 2023, by and between, Rodney L. Watson and Joann L. Watson Revocable Living Trust dated March 23rd, 2019, and any amendments thereto as GRANTOR, and Twin Ventures, LLC as GRANTEE, whose mailing address is 18902 174th Street, Tonganoxie, KS 66086.

WITNESSETH: That the said GRANTOR, in consideration of the sum of Ten DOLLARS and other good and valuable consideration, in hand paid by the GRANTEE, the receipt of which is hereby acknowledged, does by these presents sell and convey unto said GRANTEE, GRANTEE'S heirs, successors, and assigns, all of the right, title and interest of the said GRANTOR in and to the following described real estate located in the County of Leavenworth, State of Kansas, to wit:

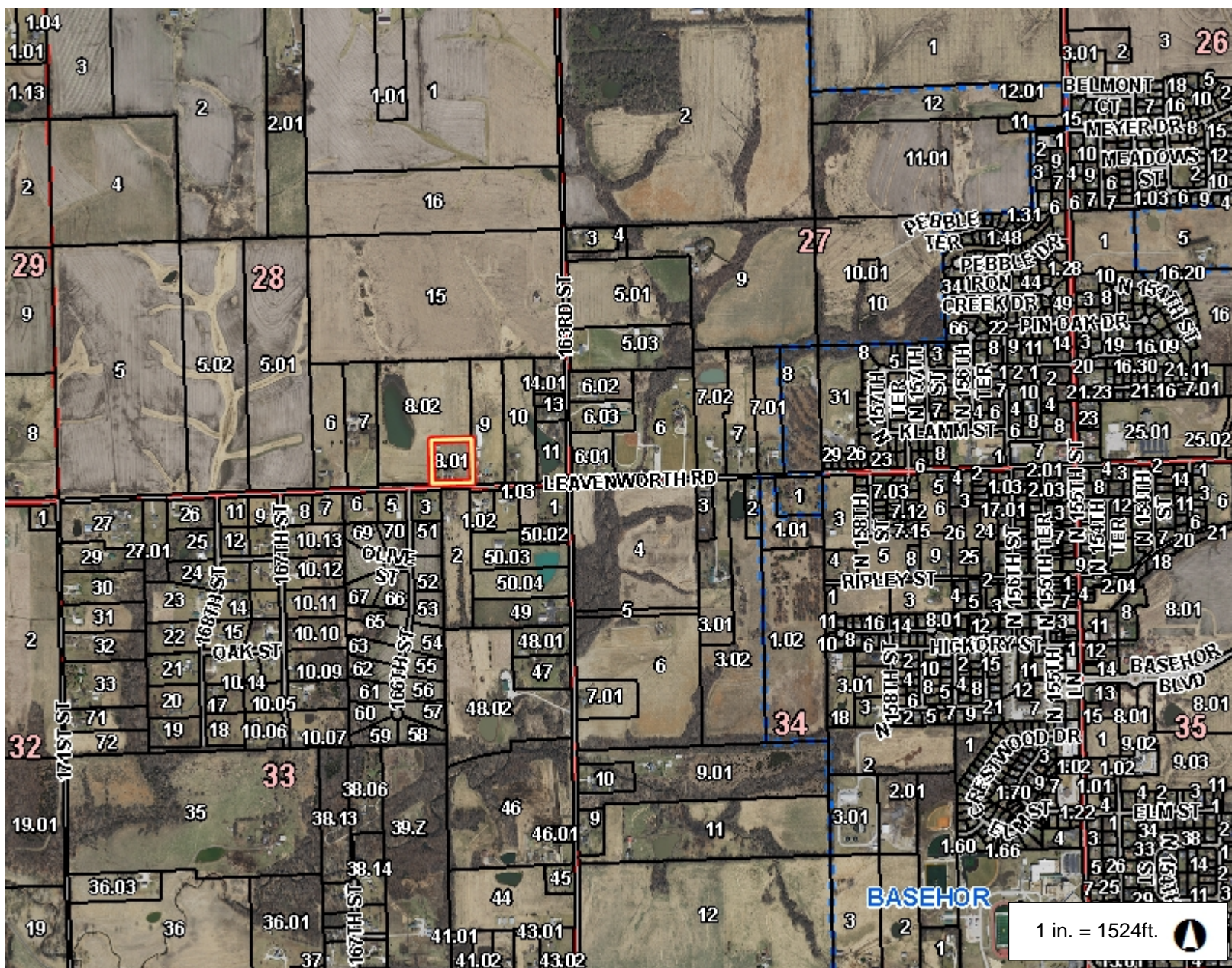
Legal Description: Lot 1, RAINMAKER RANCH ADDITION, a subdivision in Leavenworth County, Kansas

Note: Subject to all easements, restrictions and reservations, if any, now of record.














This Deed is made and given by the GRANTOR as Trustee(s) pursuant to the power of sale contained in the aforesaid Trust Agreement, which Agreement remains in full force and effect at this time. And the GRANTOR further states that the power to sell and convey the real estate described hereinabove is granted under said Trust Agreement.

To have and to hold the premises aforesaid with all, and singular, the tenements, hereditaments, and appurtenances thereunto belonging, or in any way appertaining thereto, unto the GRANTEE, and unto GRANTEE heirs, successors, and assigns forever; the said GRANTOR hereby covenants that an indefeasible estate in fee of the aforesaid premises is vested in the said GRANTOR; that the said premises unto the said GRANTEE and unto GRANTEE'S heirs, successors, and assigns forever, against the lawful claims and demands of all persons whomsoever.

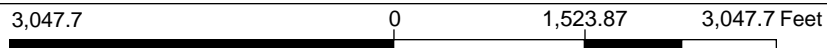
Leavenworth County, KS



Legend

-  Parcel Number
-  Parcel
-  City Limit Line
-  Major Road
 -  <all other values>
 -  70
-  Road
 -  <all other values>
 -  PRIVATE
-  Railroad
-  Section
-  Section Boundaries
-  County Boundary

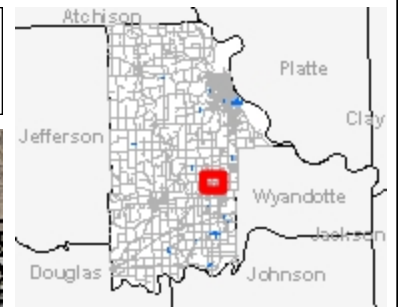
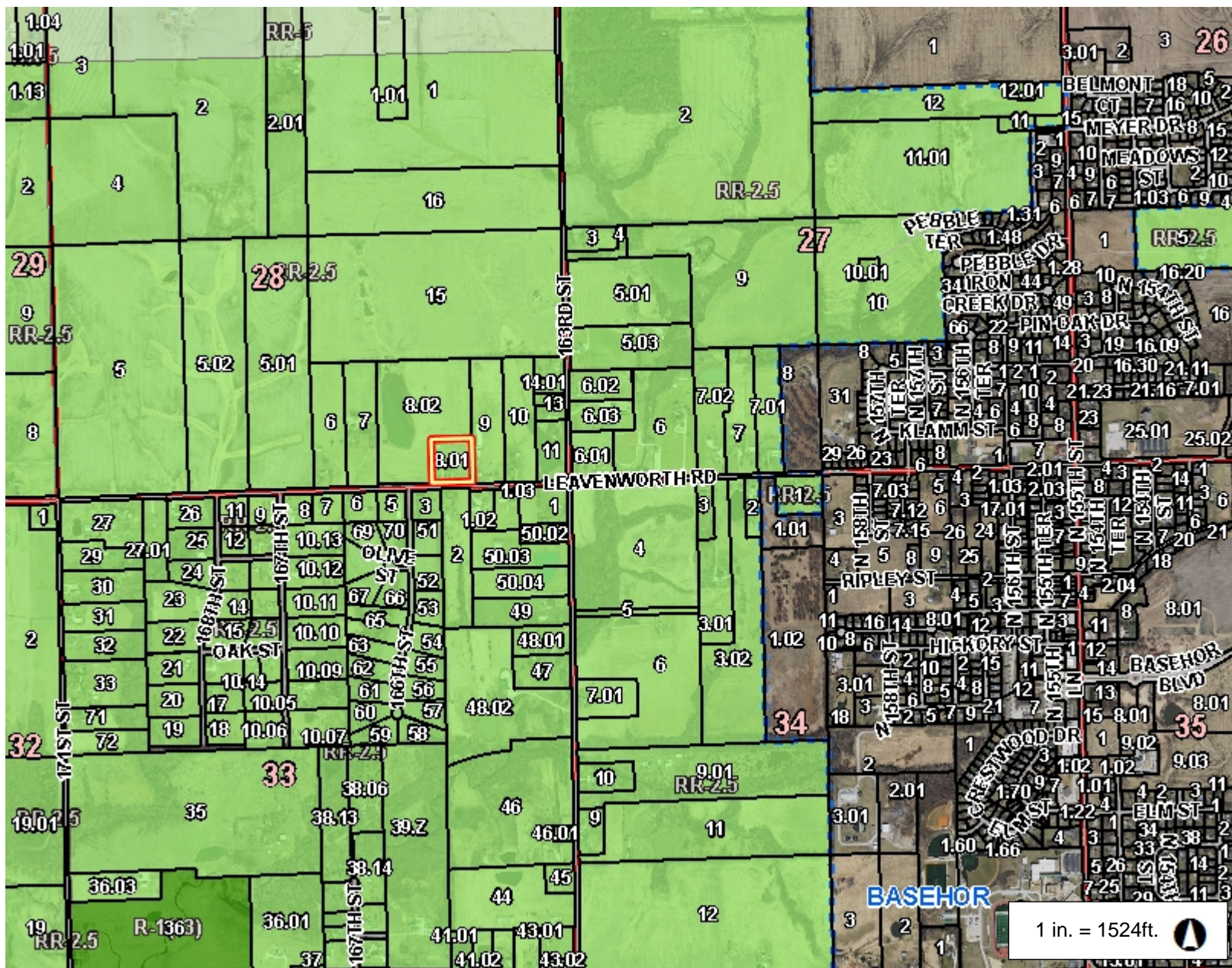
Notes



This Cadastral Map is for informational purposes only. It does not purport to represent a property boundary survey of the parcels shown and shall not be used for conveyances or the establishment of property boundaries.

THIS MAP IS NOT TO BE USED FOR NAVIGATION

Leavenworth County, KS



Legend

- Parcel Number
- Parcel
- City Limit Line
- Major Road
 - <all other values>
 - 70
- Road
 - <all other values>
 - PRIVATE
- Railroad
- Section
- Section Boundaries
- County Boundary
- Zoning
 - B-1
 - B-2
 - B-3
 - I-1
 - I-2
 - I-3
 - MXD
 - PC
 - PI
 - PR-1
 - PR-2
 - PR-3

Notes

3,047.7	0	1,523.87	3,047.7 Feet
---------	---	----------	--------------

This Cadastral Map is for informational purposes only. It does not purport to represent a property boundary survey of the parcels shown and shall not be used for conveyances or the establishment of property boundaries.

THIS MAP IS NOT TO BE USED FOR NAVIGATION

420

16476
Leavenworth RD
Basehor, KS 66007

Lot 1 Rainmaker
Ranch
4.34
Acres

450

Existing
House

650' →

450

Proposed
Lot
1.54
Acres

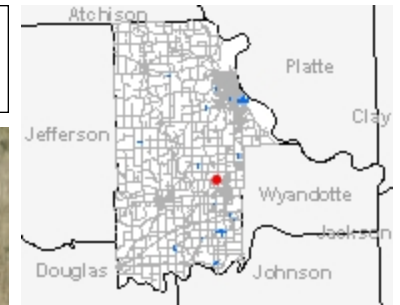


150

420

Leavenworth RD

Leavenworth County, KS



Legend

- Address Point
- Parcel Number
- Lot Line
- Parcel
- City Limit Line
- Major Road
- <all other values>
- 70
- Road
- <all other values>
- PRIVATE
- Railroad
- Section
- Section Boundaries
- County Boundary

Notes

190.5 0 95.24 190.5 Feet

This Cadastral Map is for informational purposes only. It does not purport to represent a property boundary survey of the parcels shown and shall not be used for conveyances or the establishment of property boundaries.

THIS MAP IS NOT TO BE USED FOR NAVIGATION



P.O. Box 419
15520 Crestwood Dr.
Basehor, KS 66007
913-724-7000 - O
913-724-1310 - F
www.crwld1.com

August 16, 2024

Joshua J. Schweitzer
Development Planner
Leavenworth County Planning & Zoning
300 Walnut St, Suite 212
Leavenworth County, Kansas 66048

Re: 16476 Leavenworth Rd Rezoning Request

Dear Mr. Schweitzer,

Consolidated Water District #1 has no objections to the proposed rezoning. Any new domestic service connections will follow applicable water district policies in place at that time.

If you have any additional questions/comments, please contact me at your convenience.

Respectfully,

Mike Fulkerson

Mike Fulkerson
General Manager

Cc; file

Schweitzer, Joshua

From: Boone Heston <Boone.Heston@evergy.com>
Sent: Monday, August 19, 2024 8:27 AM
To: Schweitzer, Joshua
Subject: Re: [EXTERNAL]DEV-24-110 Twin Ventures Rezone

Notice: This email originated from outside this organization. Do not click on links or open attachments unless you trust the sender and know the content is safe.

Internal Use Only

Evergy has no concerns with the proposed lot.

Thanks,

Boone Heston

TD Designer
Leavenworth, KS
Evergy
Boone.Heston@evergy.com
O 785-508-2590

From: Schweitzer, Joshua <JSchweitzer@leavenworthcounty.gov>
Sent: Friday, August 16, 2024 1:28 PM
To: Magaha, Chuck <cmagaha@lvsheriff.org>; Miller, Jamie <JMiller@leavenworthcounty.gov>; Patzwald, Joshua <jpatzwald@lvsheriff.org>; Van Parys, David <DVanParys@leavenworthcounty.gov>; Brown, Misty <MBrown@leavenworthcounty.gov>; 'Mitch Pleak' <mpleak@olsson.com>; Noll, Bill <BNoll@leavenworthcounty.gov>; McAfee, Joe <JMcAfee@leavenworthcounty.gov>; Design Group Leavenworth <designgroupleavenworth@evergy.com>; 'lingenfelserm@fairmountfd.org' <lingenfelserm@fairmountfd.org>; 'mfulkerson@crwd1.com' <mfulkerson@crwd1.com>
Cc: PZ <PZ@leavenworthcounty.gov>
Subject: [EXTERNAL]DEV-24-110 Twin Ventures Rezone

This Message Is From an External Sender

This message came from outside your organization.

Report Suspicious

Good Afternoon,

The Department of Planning and Zoning has received a rezoning application for the property located at 16476 Leavenworth Rd. (RR-2.5 to R-1(43)).

The Planning Staff would appreciate your written input in consideration of the above request. Please review the attached information and forward any comments to us by August 30, 2024.

Schweitzer, Joshua

From: Mike Lingenfelter <lingenfelterm@fairmountfd.org>
Sent: Monday, August 19, 2024 9:21 AM
To: Schweitzer, Joshua
Subject: Re: DEV-24-110 Twin Ventures Rezone

Notice: This email originated from outside this organization. Do not click on links or open attachments unless you trust the sender and know the content is safe.

Joshua
Fairmount Township Fire Department has no issues.
Mike Lingenfelter, Fire Chief
Fairmount Township Fire Department
2624 N 155th St
Basehor, Kansas 66007
Work-913-724-4911
Cell 913-306-0258

On Fri, Aug 16, 2024 at 1:28 PM Schweitzer, Joshua <JSchweitzer@leavenworthcounty.gov> wrote:

Good Afternoon,

The Department of Planning and Zoning has received a rezoning application for the property located at 16476 Leavenworth Rd. (RR-2.5 to R-1(43)).

The Planning Staff would appreciate your written input in consideration of the above request. Please review the attached information and forward any comments to us by August 30, 2024.

If you have any questions or need additional information, please contact me at (913) 684-0465 or at pz@leavenworthcounty.gov

v / r

Joshua J. Schweitzer

Development Planner

Leavenworth County Planning & Zoning

Schweitzer, Joshua

From: Anderson, Kyle
Sent: Thursday, August 22, 2024 12:06 PM
To: Schweitzer, Joshua
Subject: RE: DEV-24-110 Twin Ventures Rezone

We have not received any complaints on this property. During the platting process we will need to verify that the septic system currently installed meets the setback requirements after any division of the property. The septic system on the proposed 1.54 acre lot will need to be designed by an engineer.

Kyle Anderson
Environmental Technician/Code Enforcement
Leavenworth County Planning & Zoning
300 Walnut St. Ste. 212
Leavenworth, KS 66048
913-684-1084

Disclaimer: This message and any attachments are intended only for the use of the recipient or their authorized representative. The information provided in this email is limited in scope and response detail by available information, current zoning and subdivision regulations. Depending on the level of development, the applicable regulations can change. Final approval cannot be granted until a complete application has been submitted, reviewed and approved by the governing body. Nothing in this message or its contents should be interpreted to authorize or conclude approval by Leavenworth County.

From: Schweitzer, Joshua <JSchweitzer@leavenworthcounty.gov>
Sent: Friday, August 16, 2024 1:28 PM
To: Magaha, Chuck <cmagaha@lvsheriff.org>; Miller, Jamie <JMiller@leavenworthcounty.gov>; Patzwald, Joshua <jpatzwald@lvsheriff.org>; Van Parys, David <DVanParys@leavenworthcounty.gov>; Brown, Misty <MBrown@leavenworthcounty.gov>; 'Mitch Pleak' <mpleak@olsson.com>; Noll, Bill <BNoll@leavenworthcounty.gov>; McAfee, Joe <JMcAfee@leavenworthcounty.gov>; 'designgroupleavenworth@evergy.com' <designgroupleavenworth@evergy.com>; 'lingenfelserm@fairmountfd.org' <lingenfelserm@fairmountfd.org>; 'mfulkerson@crwd1.com' <mfulkerson@crwd1.com>
Cc: PZ <PZ@leavenworthcounty.gov>
Subject: DEV-24-110 Twin Ventures Rezone

Good Afternoon,

The Department of Planning and Zoning has received a rezoning application for the property located at 16476 Leavenworth Rd. (RR-2.5 to R-1(43)).

The Planning Staff would appreciate your written input in consideration of the above request. Please review the attached information and forward any comments to us by August 30, 2024.

If you have any questions or need additional information, please contact me at (913) 684-0465 or at pz@leavenworthcounty.gov

v / r

Joshua J. Schweitzer
Development Planner

Schweitzer, Joshua

From: McAfee, Joe
Sent: Thursday, August 29, 2024 10:37 AM
To: Schweitzer, Joshua; Magaha, Chuck; Miller, Jamie; Patzwald, Joshua; Van Parys, David; Brown, Misty; 'Mitch Pleak'; Noll, Bill; 'designgroupleavenworth@evergy.com'; 'lingenfelserm@fairmountfd.org'; 'mfulkerson@crwd1.com'
Cc: PZ
Subject: RE: DEV-24-110 Twin Ventures Rezone

Joshua,
PW Engineering has no comment on the rezone.

From: Schweitzer, Joshua <JSchweitzer@leavenworthcounty.gov>
Sent: Friday, August 16, 2024 1:28 PM
To: Magaha, Chuck <cmagaha@lvsheriff.org>; Miller, Jamie <JMiller@leavenworthcounty.gov>; Patzwald, Joshua <jpatzwald@lvsheriff.org>; Van Parys, David <DVanParys@leavenworthcounty.gov>; Brown, Misty <MBrown@leavenworthcounty.gov>; 'Mitch Pleak' <mpleak@olsson.com>; Noll, Bill <BNoll@leavenworthcounty.gov>; McAfee, Joe <JMcAfee@leavenworthcounty.gov>; 'designgroupleavenworth@evergy.com' <designgroupleavenworth@evergy.com>; 'lingenfelserm@fairmountfd.org' <lingenfelserm@fairmountfd.org>; 'mfulkerson@crwd1.com' <mfulkerson@crwd1.com>
Cc: PZ <PZ@leavenworthcounty.gov>
Subject: DEV-24-110 Twin Ventures Rezone

Good Afternoon,

The Department of Planning and Zoning has received a rezoning application for the property located at 16476 Leavenworth Rd. (RR-2.5 to R-1(43)).

The Planning Staff would appreciate your written input in consideration of the above request. Please review the attached information and forward any comments to us by August 30, 2024.

If you have any questions or need additional information, please contact me at (913) 684-0465 or at pz@leavenworthcounty.gov

v / r

Joshua J. Schweitzer
Development Planner
Leavenworth County Planning & Zoning
300 Walnut St, Suite 212
Leavenworth County, Kansas 66048
(913) 684-0465

RESOLUTION 2024-24

A resolution of the Leavenworth County Kansas Board of Commissioners, authorizing a rezoning from RR-2.5 to R-1(43) as defined by the Zoning and Subdivision Regulations of Leavenworth County, Kansas on the following described property:

Lot 1, Rainmaker Ranch Addition, a subdivision in Leavenworth County, Kansas, more commonly known as 16638 Leavenworth Road.

WHEREAS, it is hereby found and determined that a request for a Rezoning as described above was filed with the Secretary of the Leavenworth County Planning Commission, on the 13th day of August, 2024, and

WHEREAS, it is hereby found that the Leavenworth County Planning Commission, after notice as required by law, did conduct a public hearing for Case DEV-24-110 upon the granting of such request for a Rezoning on the 11th day of September, 2024; and

WHEREAS, it is hereby found that the Leavenworth County Planning Commission, based upon specific findings of fact incorporated by reference herein, did recommend that the Rezoning be approved; and

WHEREAS, the Board of County Commissioners considered, in session on the 2nd day of October, 2024, the recommendation of the Leavenworth County Planning Commission.

NOW, THEREFORE, BE IT RESOLVED by the Board of County Commissioners of Leavenworth County, Kansas, that:

1. Based upon the recommendation and findings of fact of the Leavenworth County Planning Commission and the findings of fact adopted by the Board of County Commissioners in regular session on the 2nd day of October, 2024, and incorporated herein by reference, it is hereby resolved that request for rezoning as described above, also known as 16638 Leavenworth Road, Parcel Identification Number 158-28-0-00-00-008.01, is hereby granted.
2. The Planning and Zoning Department of Leavenworth County, Kansas is hereby ordered to and directed to cause such designations to be made on the official District Map of said County in its custody and to show property herein described to be now zoned R-1(43). Said District Map previously incorporated by reference by Section 4 of the Zoning and Subdivision Regulations of the Leavenworth County, Kansas is hereby incorporated as part of the Zoning Resolution as amended.
3. This Resolution shall be in full force and effect from and after its adoption and publication in the Leavenworth Times.

Adopted this 2nd day of October, 2024
Board of County Commission
Leavenworth, County, Kansas

Jeff Culbertson, Chairman

ATTEST:

Vicky Kaaz, Member

Janet Klasinski, Leavenworth County Clerk

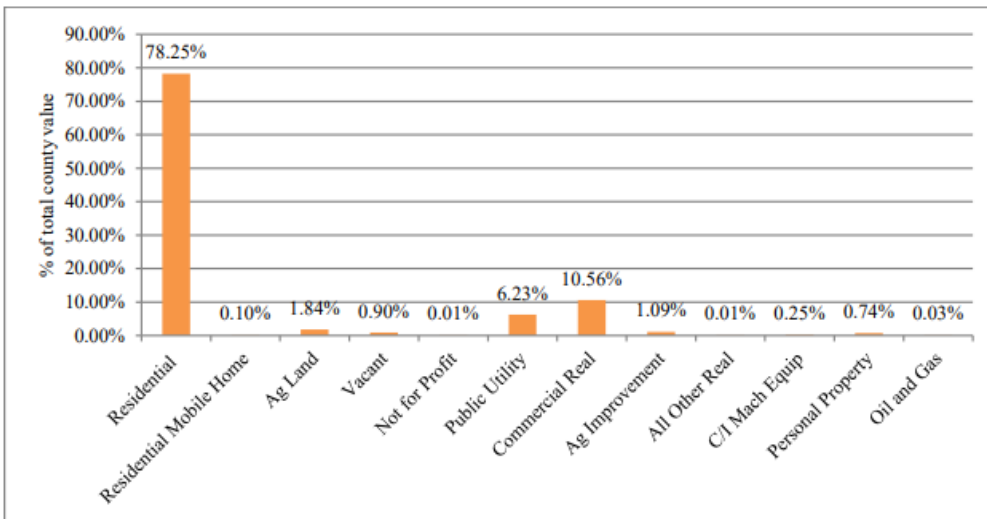
Doug Smith, Member

Mike Smith, Member

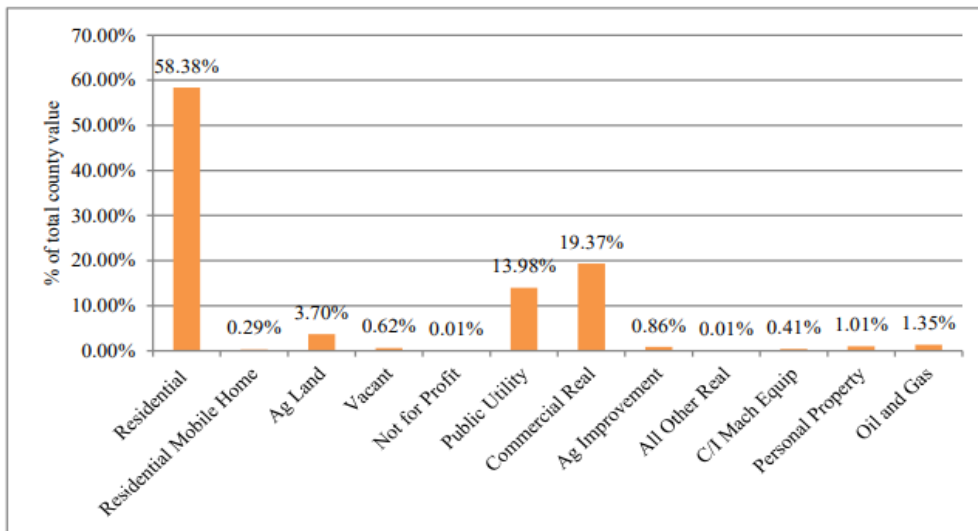
Mike Stieben, Member

County Appraiser Presentation

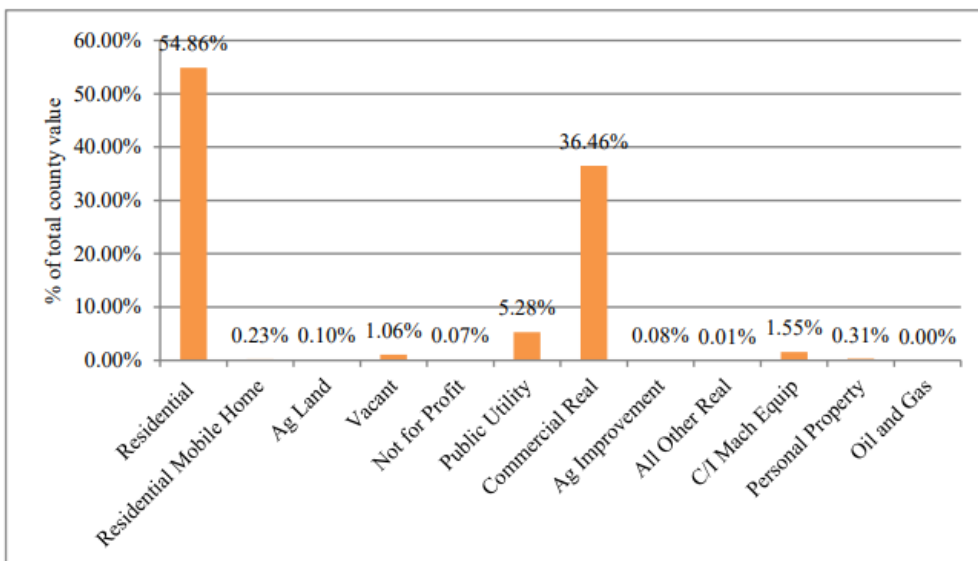
Leavenworth Residential \$840,714,981 Commercial 113,424,316 Public Utility \$66,888,674 Total \$1,074,415,530



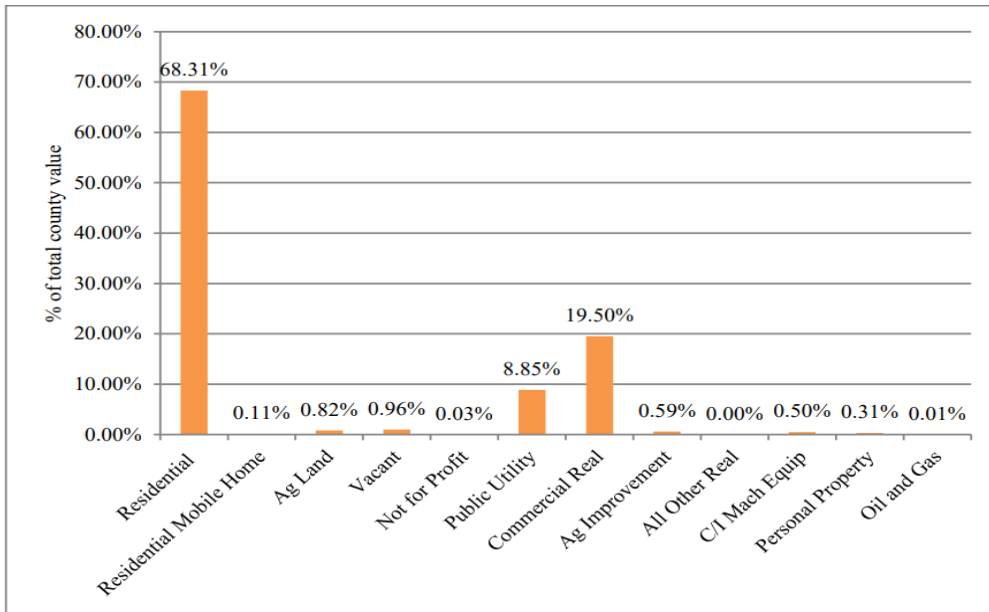
Butler Residential \$610,518,304 Commercial \$202,559,935 Public Utility \$146,201,020 Total \$1,045,834,367



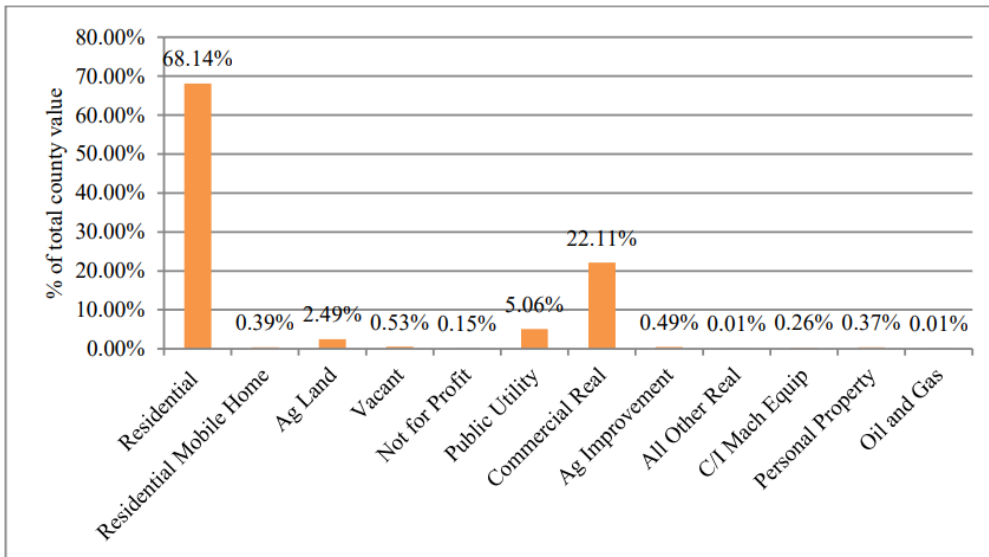
Wyandotte Residential \$1,099,467,879 Commercial \$730,788,086 Public Utility \$105,870,356 Total \$2,004,226,418



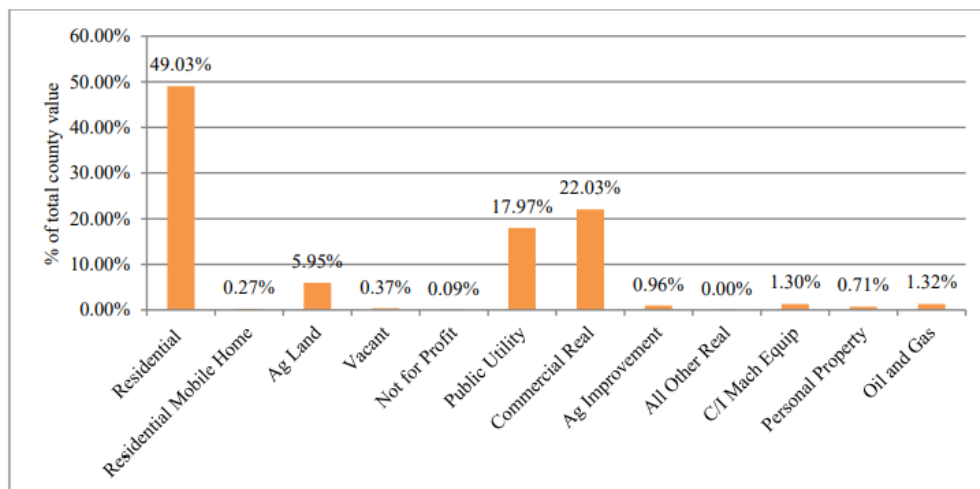
Douglas Residential \$1,345,850,772 Commercial \$384,263,613 Public Utility \$174,423,953 Total \$1,970,296,065



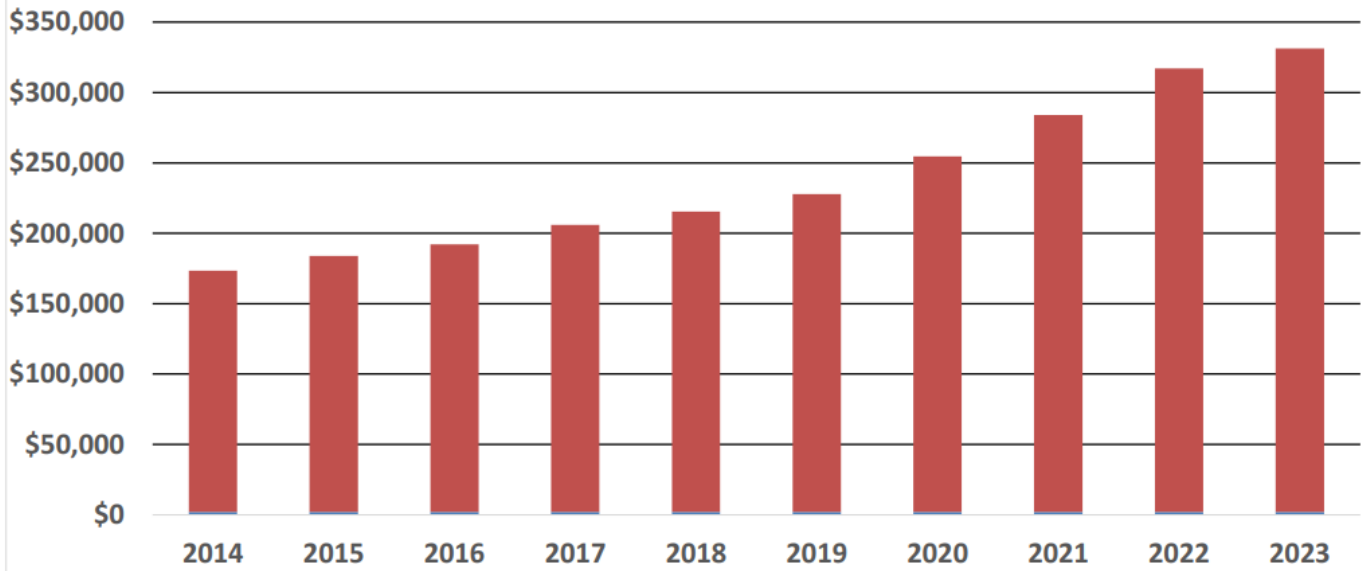
Riley Residential \$556,216,421 Commercial \$180,489,668 Public Utility \$41,266,956 Total \$816,306,623



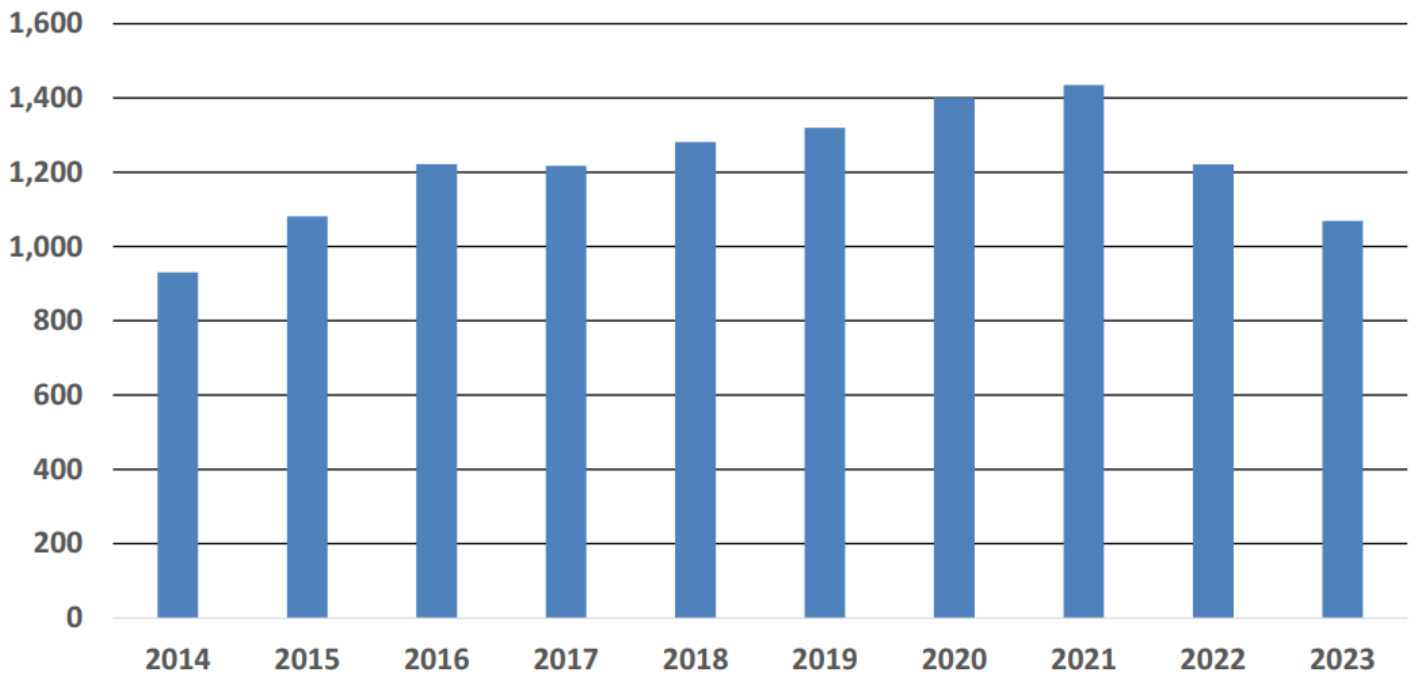
Reno Residential \$351,207,986 Commercial \$157,810,298 Public Utility \$128,727,367 Total \$716,310,001



Average Sales Prices



Number of Sales



Kansas History

- 1959 State wide reappraisal
- Subsequent individual county reappraisal
- Challenges to individual county reappraisal
 - School districts overlapping county lines
- Kansas Supreme Court Ruled individual county reappraisals unconstitutional
- Statewide reappraisal
- Appraise all property annually
- 1992 School finance lawsuit
- 1992 Kansas Attorney General lawsuit
 - Property values not uniform and equal across state

1992 Attorney General Lawsuit

- How to evaluate appraisal performance
 - Are appraisals uniform and equal?
 - Are appraisals at market value?
- Appraisal maintenance specifications
- Procedural compliance audits
- Assessment sales ratio studies